



TRANSPORTATION CABINET

Frankfort, Kentucky 40622
www.transportation.ky.gov/

Steven L. Beshear
Governor

Michael W. Hancock, P.E.
Secretary

October 20, 2015

CALL NO. 202
CONTRACT ID NO. 151067
ADDENDUM # 2

Subject: Fayette County, 034GR15D067
Letting October 23, 2015

- (1) Revised - Plan Sheets - R2F, R2H, R2I, R2K, R3, R6, & R9
- (2) Revised - Material Summary - Pages 51-55 of 133
- (3) Revised - Bid Items - Pages 129-133 of 133
- (4) Added - Notes - Pages 1-17 of 17

Proposal revisions are available at <http://transportation.ky.gov/Construction-Procurement/>.

Plan revisions are available at <http://www.lynnimaging.com/kytransportation/>.

If you have any questions, please contact us at 502-564-3500.

Sincerely,

A handwritten signature in cursive script that reads "Rachel Mills".

Rachel Mills, P.E.
Director
Division of Construction Procurement

RM:ks
Enclosures



An Equal Opportunity Employer M/F/D

MEN'S MANUFACTURED RESTROOM BUILDING

WOMEN'S MANUFACTURED RESTROOM BUILDING

COUNTY OF	ITEM NO.	SHEET NO.
FAYETTE	7-3711.00	R2F

PLAN REVISION DATE: 10-16-2015

LEGEND		
SYMBOL	DESCRIPTION	AREA/ QUANTITY
---	GABLE VENT	4
---	RIDGE VENT	4
---	2X6 WOOD FILLER WALL	2
---	EXTERIOR WALL LIGHTS	6
---	INTERIOR WALL LIGHTS	8
---	INTERIOR CEILING LIGHTS	2
○	FLOOR DRAIN	10
Y-HB	WALL HYDRANT	1
*HB-1	WALL FAUCET	1
○	ELECTRICAL OUTLET	1
□	TWO ROLL TP DISPENSER	2
□	TOWEL DISPENSER	2
□	SOAP DISPENSER	2
□	18"X18" LOVERED DOOR VENT	4
□	24" X 24" KICK-PROOF WALL VENT	8

THESE PLAN VIEW AND ELEVATION DRAWINGS ARE A PRELIMINARY ARCHITECTURAL REPRESENTATION OF THE BUILDING. ALL DIMENSIONS, FEATURES AND COMPONENTS SHOWN ON THESE PRELIMINARY DRAWINGS MAY OR MAY NOT BE PART OF THE QUOTE. PLEASE REFER TO THE 'SCOPE OF SUPPLY AND SERVICES' LETTER PROVIDED WITH YOUR QUOTE FOR ROMTEC'S PROPOSED SCOPE OF SUPPLY.

WALL TYPE SCHEDULE

- 6" REINFORCED CONCRETE MASONRY BLOCK WALL WITH MORTAR JOINTS, GROUTED SOLID ALL CELLS RUNNING BOND PATTERN.
- 6" REINFORCED CONCRETE MASONRY BLOCK WALL WITH MORTAR JOINTS, GROUTED SOLID ALL CELLS RUNNING BOND PATTERN.

1 FLOOR PLAN
SCALE: 3/16" = 1'-0"

CONCRETE WALK (BY INSTALLER)

ROMTEC SHOWER BENCH STEEL FRAME WITH CEDAR SLATS, TYP. 4

PHENOLIC FOLD-UP BENCH, TYP. 2

24" X 24" KICK-PROOF WALL VENT, TYP. 8

ROSE MECH

TWO - 50 GALLON WATER HEATER

CONCRETE WALK (BY INSTALLER)

ROMTEC
18240 NORTH BANK ROAD, ROSELBURG, OR 97470
PH: 503-838-8881 FAX: 503-838-8880

PRELIMINARY

PROJECT: 2102 SIERRA VY MULTI USER RESTROOMS, SIX PRIVATE SHOWERS
KENTUCKY DEPARTMENT OF HIGHWAYS
HORSE PARK IMPROVEMENTS - MEN
LEXINGTON, KENTUCKY

MODEL: 451
DATE: 10/16/2015
REVISIONS:

TH

SHEET NO. 1

LEGEND		
SYMBOL	DESCRIPTION	AREA/ QUANTITY
---	GABLE VENT	4
---	RIDGE VENT	4
---	2X6 WOOD FILLER WALL	2
---	EXTERIOR WALL LIGHTS	6
---	INTERIOR WALL LIGHTS	8
---	INTERIOR CEILING LIGHTS	2
○	FLOOR DRAIN	10
Y-HB	WALL HYDRANT	1
*HB-1	WALL FAUCET	1
□	TWO ROLL TP DISPENSER	6
□	TOWEL DISPENSER	2
□	SOAP DISPENSER	2
□	18"X18" LOVERED DOOR VENT	4
□	24" X 24" KICK-PROOF WALL VENT	8

THESE PLAN VIEW AND ELEVATION DRAWINGS ARE A PRELIMINARY ARCHITECTURAL REPRESENTATION OF THE BUILDING. ALL DIMENSIONS, FEATURES AND COMPONENTS SHOWN ON THESE PRELIMINARY DRAWINGS MAY OR MAY NOT BE PART OF THE QUOTE. PLEASE REFER TO THE 'SCOPE OF SUPPLY AND SERVICES' LETTER PROVIDED WITH YOUR QUOTE FOR ROMTEC'S PROPOSED SCOPE OF SUPPLY.

WALL TYPE SCHEDULE

- 6" REINFORCED CONCRETE MASONRY BLOCK WALL WITH MORTAR JOINTS, GROUTED SOLID ALL CELLS RUNNING BOND PATTERN.
- 6" REINFORCED CONCRETE MASONRY BLOCK WALL WITH MORTAR JOINTS, GROUTED SOLID ALL CELLS RUNNING BOND PATTERN.

1 FLOOR PLAN
SCALE: 3/16" = 1'-0"

CONCRETE WALK (BY INSTALLER)

ROMTEC SHOWER BENCH STEEL FRAME WITH CEDAR SLATS, TYP. 4

PHENOLIC FOLD-UP BENCH, TYP. 2

24" X 24" KICK-PROOF WALL VENT, TYP. 8

ROSE MECH

TWO - 50 GALLON WATER HEATER

CONCRETE WALK (BY INSTALLER)

ROMTEC
18240 NORTH BANK ROAD, ROSELBURG, OR 97470
PH: 503-838-8881 FAX: 503-838-8880

PRELIMINARY

PROJECT: 2102 SIERRA VY MULTI USER RESTROOMS, SIX PRIVATE SHOWERS
KENTUCKY DEPARTMENT OF HIGHWAYS
HORSE PARK IMPROVEMENTS - WOMEN
LEXINGTON, KENTUCKY

MODEL: 451
DATE: 10/16/2015
REVISIONS:

TH

SHEET NO. 1

THESE PLAN VIEW AND ELEVATION DRAWINGS ARE A PRELIMINARY ARCHITECTURAL REPRESENTATION OF THE BUILDING. ALL DIMENSIONS, FEATURES AND COMPONENTS SHOWN ON THESE PRELIMINARY DRAWINGS MAY OR MAY NOT BE PART OF THE QUOTE. PLEASE REFER TO THE 'SCOPE OF SUPPLY AND SERVICES' LETTER PROVIDED WITH YOUR QUOTE FOR ROMTEC'S PROPOSED SCOPE OF SUPPLY.

B ELEVATION VIEW
SCALE: 1/4" = 1'-0"

3" VTR

4.8

WIRE MESH GABLE VENT

GLULAM BEAMS

FASCIA

WALL MOUNT LIGHT, TYP

16" X 16" DOOR VENT, TYP 4

1'-1 1/2"

8'-0"

28'-0"

FG

C ELEVATION VIEW
SCALE: 1/4" = 1'-0"

METAL ROOF

1'-0"

24" X 24" KICK-RESISTANT VENT, TYP. (8)

36'-0"

FG

ROMTEC
18240 NORTH BANK ROAD, ROSELBURG, OR 97470
PH: 503-838-8881 FAX: 503-838-8880

PRELIMINARY

PROJECT: 2102 SIERRA VY MULTI USER RESTROOMS, SIX PRIVATE SHOWERS
KENTUCKY DEPARTMENT OF HIGHWAYS
HORSE PARK IMPROVEMENTS - MEN
LEXINGTON, KENTUCKY

MODEL: 451
DATE: 10/16/2015
REVISIONS:

TH

SHEET NO. 2

THESE PLAN VIEW AND ELEVATION DRAWINGS ARE A PRELIMINARY ARCHITECTURAL REPRESENTATION OF THE BUILDING. ALL DIMENSIONS, FEATURES AND COMPONENTS SHOWN ON THESE PRELIMINARY DRAWINGS MAY OR MAY NOT BE PART OF THE QUOTE. PLEASE REFER TO THE 'SCOPE OF SUPPLY AND SERVICES' LETTER PROVIDED WITH YOUR QUOTE FOR ROMTEC'S PROPOSED SCOPE OF SUPPLY.

B ELEVATION VIEW
SCALE: 1/4" = 1'-0"

3" VTR

4.8

WIRE MESH GABLE VENT

GLULAM BEAMS

FASCIA

WALL MOUNT LIGHT, TYP

16" X 16" DOOR VENT, TYP 4

1'-1 1/2"

8'-0"

28'-0"

FG

C ELEVATION VIEW
SCALE: 1/4" = 1'-0"

METAL ROOF

1'-0"

24" X 24" KICK-RESISTANT VENT, TYP. (8)

36'-0"

FG

ROMTEC
18240 NORTH BANK ROAD, ROSELBURG, OR 97470
PH: 503-838-8881 FAX: 503-838-8880

PRELIMINARY

PROJECT: 2102 SIERRA VY MULTI USER RESTROOMS, SIX PRIVATE SHOWERS
KENTUCKY DEPARTMENT OF HIGHWAYS
HORSE PARK IMPROVEMENTS - WOMEN
LEXINGTON, KENTUCKY

MODEL: 451
DATE: 10/16/2015
REVISIONS:

TH

SHEET NO. 2

- ① FACILITY SHALL HAVE A METAL ROOF
- ② FACILITY SHALL BE MODIFIED TO HAVE A MENS AND WOMANS RESTROOM IN SEPARATE BUILDINGS
- ③ CONTRACTOR IS RESPONSIBLE FOR PROVIDING ELECTRICAL SERVICE AND CONNECTION OF SERVICE TO BUILDING
- ④ ONE SECURITY LIGHT SHALL BE PLACED ON EACH BUILDING (INCIDENTAL TO MANUFACTURED BUILDING)
- ⑤ SEE MANUFACTURER SPECIFICATIONS

SCALE: 1"=NTS

HORSE PARK IMPROVEMENTS
TYPICAL SECTIONS

FILE NAME: D:\PW_WORK\DIR_RICK\DMS300\TR02020FTS.DGN
 USER: rick
 DATE PLOTTED: October 16, 2015
 E-SHEET NAME:
 MicroStation v8.11.9.459

MEN'S MANUFACTURED RESTROOM BUILDING

WOMEN'S MANUFACTURED RESTROOM BUILDING

COUNTY OF	ITEM NO.	SHEET NO.
FAYETTE	7-3711.00	R2F

PLAN REVISION DATE: 10-16-2015

LEGEND		
SYMBOL	DESCRIPTION	AREA/ QUANTITY
---	GABLE VENT	4
---	RIDGE VENT	4
---	2x6 WOOD FILLER WALL	2
---	EXTERIOR WALL LIGHTS	6
---	INTERIOR WALL LIGHTS	8
---	INTERIOR CEILING LIGHTS	2
○	FLOOR DRAIN	10
Y-HB	WALL HYDRANT	1
*HB-1	WALL FAUCET	1
○	ELECTRICAL OUTLET	1
□	TWO ROLL TP DISPENSER	2
□	TOWEL DISPENSER	2
□	SOAP DISPENSER	2
□	18"X18" LOVERED DOOR VENT	4
□	24" x 24" KICK-PROOF WALL VENT	8

THESE PLAN VIEW AND ELEVATION DRAWINGS ARE A PRELIMINARY ARCHITECTURAL REPRESENTATION OF THE BUILDING. ALL DIMENSIONS, FEATURES AND COMPONENTS SHOWN ON THESE PRELIMINARY DRAWINGS MAY OR MAY NOT BE PART OF THE QUOTE. PLEASE REFER TO THE 'SCOPE OF SUPPLY AND SERVICES' LETTER PROVIDED WITH YOUR QUOTE FOR ROMTEC'S PROPOSED SCOPE OF SUPPLY.

WALL TYPE SCHEDULE

6" REINFORCED CONCRETE MASONRY BLOCK WALL WITH MORTAR JOINTS, GROUTED SOLID ALL CELLS RUNNING BOND PATTERN.

6" REINFORCED CONCRETE MASONRY BLOCK WALL WITH MORTAR JOINTS, GROUTED SOLID ALL CELLS RUNNING BOND PATTERN.

1 FLOOR PLAN
SCALE: 3/16" = 1'-0"

ROMTEC
18240 NORTH BANK ROAD, ROSELBURG, OH 47470
PRELIMINARY

PROJECT: 2102 SIERRA VY MULTI USER RESTROOMS, SIX PRIVATE SHOWERS
KENTUCKY DEPARTMENT OF HIGHWAYS
HORSE PARK IMPROVEMENTS - MEN
LEXINGTON, KENTUCKY

MODEL: 451
DATE: 10/16/2015
REVISIONS:

LEGEND		
SYMBOL	DESCRIPTION	AREA/ QUANTITY
---	GABLE VENT	4
---	RIDGE VENT	4
---	2x6 WOOD FILLER WALL	2
---	EXTERIOR WALL LIGHTS	6
---	INTERIOR WALL LIGHTS	8
---	INTERIOR CEILING LIGHTS	2
○	FLOOR DRAIN	10
Y-HB	WALL HYDRANT	1
*HB-1	WALL FAUCET	1
□	TWO ROLL TP DISPENSER	6
□	TOWEL DISPENSER	2
□	SOAP DISPENSER	2
□	18"X18" LOVERED DOOR VENT	4
□	24" x 24" KICK-PROOF WALL VENT	8

THESE PLAN VIEW AND ELEVATION DRAWINGS ARE A PRELIMINARY ARCHITECTURAL REPRESENTATION OF THE BUILDING. ALL DIMENSIONS, FEATURES AND COMPONENTS SHOWN ON THESE PRELIMINARY DRAWINGS MAY OR MAY NOT BE PART OF THE QUOTE. PLEASE REFER TO THE 'SCOPE OF SUPPLY AND SERVICES' LETTER PROVIDED WITH YOUR QUOTE FOR ROMTEC'S PROPOSED SCOPE OF SUPPLY.

WALL TYPE SCHEDULE

6" REINFORCED CONCRETE MASONRY BLOCK WALL WITH MORTAR JOINTS, GROUTED SOLID ALL CELLS RUNNING BOND PATTERN.

6" REINFORCED CONCRETE MASONRY BLOCK WALL WITH MORTAR JOINTS, GROUTED SOLID ALL CELLS RUNNING BOND PATTERN.

1 FLOOR PLAN
SCALE: 3/16" = 1'-0"

ROMTEC
18240 NORTH BANK ROAD, ROSELBURG, OH 47470
PRELIMINARY

PROJECT: 2102 SIERRA VY MULTI USER RESTROOMS, SIX PRIVATE SHOWERS
KENTUCKY DEPARTMENT OF HIGHWAYS
HORSE PARK IMPROVEMENTS - WOMEN
LEXINGTON, KENTUCKY

MODEL: 451
DATE: 10/16/2015
REVISIONS:

THESE PLAN VIEW AND ELEVATION DRAWINGS ARE A PRELIMINARY ARCHITECTURAL REPRESENTATION OF THE BUILDING. ALL DIMENSIONS, FEATURES AND COMPONENTS SHOWN ON THESE PRELIMINARY DRAWINGS MAY OR MAY NOT BE PART OF THE QUOTE. PLEASE REFER TO THE 'SCOPE OF SUPPLY AND SERVICES' LETTER PROVIDED WITH YOUR QUOTE FOR ROMTEC'S PROPOSED SCOPE OF SUPPLY.

B ELEVATION VIEW
SCALE: 1/4" = 1'-0"

C ELEVATION VIEW
SCALE: 1/4" = 1'-0"

ROMTEC
18240 NORTH BANK ROAD, ROSELBURG, OH 47470
PRELIMINARY

PROJECT: 2102 SIERRA VY MULTI USER RESTROOMS, SIX PRIVATE SHOWERS
KENTUCKY DEPARTMENT OF HIGHWAYS
HORSE PARK IMPROVEMENTS - MEN
LEXINGTON, KENTUCKY

MODEL: 451
DATE: 10/16/2015
REVISIONS:

THESE PLAN VIEW AND ELEVATION DRAWINGS ARE A PRELIMINARY ARCHITECTURAL REPRESENTATION OF THE BUILDING. ALL DIMENSIONS, FEATURES AND COMPONENTS SHOWN ON THESE PRELIMINARY DRAWINGS MAY OR MAY NOT BE PART OF THE QUOTE. PLEASE REFER TO THE 'SCOPE OF SUPPLY AND SERVICES' LETTER PROVIDED WITH YOUR QUOTE FOR ROMTEC'S PROPOSED SCOPE OF SUPPLY.

B ELEVATION VIEW
SCALE: 1/4" = 1'-0"

C ELEVATION VIEW
SCALE: 1/4" = 1'-0"

ROMTEC
18240 NORTH BANK ROAD, ROSELBURG, OH 47470
PRELIMINARY

PROJECT: 2102 SIERRA VY MULTI USER RESTROOMS, SIX PRIVATE SHOWERS
KENTUCKY DEPARTMENT OF HIGHWAYS
HORSE PARK IMPROVEMENTS - WOMEN
LEXINGTON, KENTUCKY

MODEL: 451
DATE: 10/16/2015
REVISIONS:

FILE NAME: D:\PW\WORKDIR\TRICK\DMS300\TR02020FTS.DGN
 USER: rick
 DATE PLOTTED: October 16, 2015
 E-SHEET NAME:
 MicroStation v8.11.9.459

- ① FACILITY SHALL HAVE A METAL ROOF
- ② FACILITY SHALL BE MODIFIED TO HAVE A MENS AND WOMANS RESTROOM IN SEPARATE BUILDINGS
- ③ CONTRACTOR IS RESPONSIBLE FOR PROVIDING ELECTRICAL SERVICE AND CONNECTION OF SERVICE TO BUILDING
- ④ ONE SECURITY LIGHT SHALL BE PLACED ON EACH BUILDING (INCIDENTAL TO MANUFACTURED BUILDING)
- ⑤ SEE MANUFACTURER SPECIFICATIONS

HORSE PARK IMPROVEMENTS
TYPICAL SECTIONS
SCALE: 1"=NTS

GENERAL SUMMARY

7-433.00 - HORSE PARK
SITE #1-6 & TURN LANES
-3711.00 - LEGACY TRAIL

COUNTY OF	ITEM NO.	SHEET NO.
FAYETTE SCOTT	7-433.00 7-3711.00	R2H

PLAN REVISION DATE: 10-16-2015

ITEM	DESCRIPTION	UNIT	SITE #1	SITE #2	SITE #3	SITE #4	SITE #5	SITE #6	IRONWORKS TURN LANES	LEGACY TRAIL	CAMP GROUND RD TRAIL	TRAIL HEAD ACCESS RD	TRAIL HEAD	TOTAL
71	CRUSHED AGGREGATE NO 57	TON						2,174						2,174
78	CRUSHED AGGREGATE SIZE NO 2	TON	26,878	20,141	16,973					600				6,4592
82	CRUSHED AGGREGATE NO 9	TON												
83	CRUSHED AGGREGATE NO 8 ①	TON	3,754	3,091	1,732			1,086						9,663
1000	PERFORATED PIPE-4 IN ②	LF										100		100
1001	PERFORATED PIPE-6 IN ②	LF			422			796						1,218
1010	NON-PERFORATED PIPE-4 IN ②	LF										60		60
1012	NON-PERFORATED PIPE-8 IN ②	LF	630					308						938
1013	NON-PERFORATED PIPE-10 IN ②	LF			62									62
1022	PERF PIPE HEADWALL TY 1-8 IN	EACH	28	10				3						41
1028	PERF PIPE HEADWALL TY 3-4 IN	EACH										6		6
1052	SEWER PIPE-8 IN ④	LF											1,268	1,268
1310	REMOVE PIPE	LF			171		140							311
1799	SANITARY SEWER MANHOLE	EACH											4	4
1811	STANDARD CURB AND GUTTER (MOD)	LF	4,063	1,947	1,266			692	1,032					9,000
1876	STANDARD HEADER CURB MOD	LF				55							564	619
1891	ISLAND HEADER CURB TYPE 2	LF							410					410
1895	VALLEY GUTTER	LF			70									70
1982	DELINEATOR FOR GUARDRAIL M/W	EACH							3					3
2003	RELOCATE TEMP CONC BARRIER	LF							1,130					1,130
2006	REMOVE CONCRETE MEDIAN	LF							106					106
2091	REMOVE PAVEMENT	SY				264								264
2159	TEMP DITCH	LF	1,200	1,500	450	450	750	400		5,075	425	575	450	11,275
2160	CLEAN TEMP DITCH	LF	600	750	225	225	375	200		2,538	213	288	225	5,839
2200	EXCAVATION	CY	14,167	9,318	19,095	332	500	253	1,833	7,445	1,264	4,413	6,893	65,513
2237	DITCHING	LF					1,500							1,500
2242	WATER	MGAL	0.90	1.20	0.40	0.30	0.60	0.30	0.00	4.00	0.30	0.40	0.30	8.7
2265	REMOVE FENCE	LF			363					9,183	251			9,797
2351	GUARDRAIL-STEEL W BEAM-S FACE	LF							228					228
2359	GUARDRAIL CONNECTOR TO CONC MED BARR	EACH							2					2
2367	GUARDRAIL END TREATMENT TYPE 1	EACH							1					1
2369	GUARDRAIL END TREATMENT TYPE 2A	EACH							1					1
2381	REMOVE GUARDRAIL	LF							410					410
2483	CHANNEL LINING CLASS II	TON	72							300				372
2545	CLEARING AND GRUBBING ⑪	LS												1
2568	MOBILIZATION	LS												1
2569	DEMOBILIZATION	LS												1
2585	EDGE KEY	LF	1,152	195	119	231				108		75		1,880
2599	FABRIC-GEOTEXTILE TYPE IV	SY	39,666	32,317	17,323					2,000				91,306
23143EN	DECORATIVE HANDRAIL △ ⑫	LF								450				450
2650	MAINTAIN & CONTROL TRAFFIC	LS				1								1
2701	TEMP SILT FENCE	LF	1200	1500	450	450	750	400		5,075	425	575	450	11,275
2703	SILT TRAP TYPE A	EACH	11	9	5	0		1		15	1	3	1	46
2704	SILT TRAP TYPE B	EACH	11	9	5	0		1		15	1	3	1	46
2705	SILT TRAP TYPE C	EACH	11	9	5	0		1		15	1	3	1	46
2706	CLEAN SILT TRAP TYPE A	EACH	11	9	5	0		1		15	1	3	1	46
2707	CLEAN SILT TRAP TYPE B	EACH	11	9	5	0		1		15	1	3	1	46
2708	CLEAN SILT TRAP TYPE C	EACH	11	9	5	0		1		15	1	3	1	46
2720	SIDEWALK 4IN CONCRETE	SOYD				80							658	738
2726	STAKING	LS												1
2898	RELOCATE CRASH CUSHION	EACH							2					2
2900	INSTALL TEMP CRASH CUSHION	EACH							2					2
3171	CONCRETE BARRIER WALL TYPE 9T	LF							1,130					1,130
3287	SIDEWALK RAMP TYPE 1	EACH											5	5
3289	SIDEWALK RAMP TYPE 3	EACH				2				11				13
3420	WATER LINE INSTALLATION ③	LF											1,310	1,310
3425	ADJUST WATER VALVE	EACH				1								1
3436	REMOVE-REINSTALL FIRE HYDRANT	EACH				1								1
3496	VALVE-6 IN	EACH											1	1
3551	TAPPING SLEEVE & VALVE	EACH											1	1
4903	REFERENCE MARKER - SPECIAL LEGACY TRAIL MILE MARKER ⑨	EACH								2				2
5950	EROSION CONTROL BLANKET	SY	2,000	2,000	2,000	1,000	1,000	1,000	6,000	8,000	1,000	1,000	500	25,500

NOTES:

- ① GRAVEL STABILIZATION MAT (5433 SY) INCIDENTAL TO ROCK
- ② RODENT & ROCK SCREEN INCIDENTAL TO PIPE
- ③ INCLUDES PAVEMENT REPLACEMENT OF CAMP GROUND ROAD
- ⑨ SEE DETAIL ON PAGE R2D
- ⑪ 7-433.00 29.8 AC, 7-3711.00 22.3 AC
- ⑫ SEE SHEET R2C FOR DETAIL

EARTHWORK QUANTITIES

EXCAVATION INCLUDES:

14,167 CU YDS	SITE #1
9,318 CU YDS	SITE #2
19,095 CU YDS	SITE #3
332 CU YDS	SITE #4
500 CU YDS	SITE #5
253 CU YDS	SITE #6
1,833 CU YDS	IRON WORKS TURN LANES
7,445 CU YDS	LEGACY TRAIL
1,264 CU YDS	CAMP GROUND ROAD TRAIL
4,413 CU YDS	TRAIL HEAD ACCESS ROAD
6,893 CU YDS	TRAIL HEAD

65,513 CU YDS TOTAL EXCAVATION

EMBANKMENT INCLUDES:

18,654 CU YDS	SITE #1
6,831 CU YDS	SITE #2
115 CU YDS	SITE #3
119 CU YDS	SITE #4
0 CU YDS	SITE #5
1,638 CU YDS	SITE #6
47 CU YDS	IRON WORKS TURN LANES
6,804 CU YDS	LEGACY TRAIL
0 CU YDS	CAMP GROUND ROAD TRAIL
2,231 CU YDS	TRAIL HEAD ACCESS ROAD
1,401 CU YDS	TRAIL HEAD

37,840 CU YDS TOTAL EMBANKMENT

NOTE:

SITE #1 EXCAVATION INCLUDES 10,997 CY, SITE #2 EXCAVATION INCLUDES 6,783 CY OF TOP SOIL TO BE REMOVED AND PLACE ON HORSE PARK PROPERTY AT THE DIRECTION OF THE ENGINEER. EMBANKMENT QUANTITIES DO NOT INCLUDE TOP SOIL QUANTITY.

NOTE:
ESTIMATE FOR EARTHWORK CALCULATIONS FOR DESIGN ONLY. THE CONTRACTOR IS ADVISED THAT THE EARTHWORK CALCULATIONS SHOWN ARE FOR INFORMATION ONLY. ASSUMPTIONS FOR SHRINKAGE AND SWELL FACTORS ARE THE CONTRACTOR'S RESPONSIBILITY.

HORSE PARK IMPROVEMENTS
GENERAL SUMMARY

FILE NAME: D:\PW_WORKDIR\TRICK\DWG\300\TR0020HSL.DGN

USER: Trick
DATE PLOTTED: October 16, 2015

E-SHEET NAME:

MicroStation v8.11.9.459

GENERAL SUMMARY

7-433.00 - HORSE PARK
SITE #1-6 & TURN LANES
-3711.00 - LEGACY TRAIL

COUNTY OF	ITEM NO.	SHEET NO.
FAYETTE SCOTT	7-433.00 7-3711.00	R2H

PLAN REVISION DATE: 10-16-2015

ITEM	DESCRIPTION	UNIT	SITE #1	SITE #2	SITE #3	SITE #4	SITE #5	SITE #6	IRONWORKS TURN LANES	LEGACY TRAIL	CAMP GROUND RD TRAIL	TRAIL HEAD ACCESS RD	TRAIL HEAD	TOTAL
71	CRUSHED AGGREGATE NO 57	TON						2,174						2,174
78	CRUSHED AGGREGATE SIZE NO 2	TON	26,878	20,141	16,973					600				6,4592
82	CRUSHED AGGREGATE NO 9	TON												
83	CRUSHED AGGREGATE NO 8 ①	TON	3,754	3,091	1,732			1,086						9,663
1000	PERFORATED PIPE-4 IN ②	LF										100		100
1001	PERFORATED PIPE-6 IN ②	LF			422			796						1,218
1010	NON-PERFORATED PIPE-4 IN ②	LF										60		60
1012	NON-PERFORATED PIPE-8 IN ②	LF	630					308						938
1013	NON-PERFORATED PIPE-10 IN ②	LF			62									62
1022	PERF PIPE HEADWALL TY 1-8 IN	EACH	28	10				3						41
1028	PERF PIPE HEADWALL TY 3-4 IN	EACH										6		6
1052	SEWER PIPE-8 IN ④	LF											1,268	1,268
1310	REMOVE PIPE	LF			171		140							311
1799	SANITARY SEWER MANHOLE	EACH											4	4
1811	STANDARD CURB AND GUTTER (MOD)	LF	4,063	1,947	1,266			692	1,032					9,000
1876	STANDARD HEADER CURB MOD	LF				55							564	619
1891	ISLAND HEADER CURB TYPE 2	LF							410					410
1895	VALLEY GUTTER	LF			70									70
1982	DELINEATOR FOR GUARDRAIL M/W	EACH							3					3
2003	RELOCATE TEMP CONC BARRIER	LF							1,130					1,130
2006	REMOVE CONCRETE MEDIAN	LF							106					106
2091	REMOVE PAVEMENT	SY				264								264
2159	TEMP DITCH	LF	1,200	1,500	450	450	750	400		5,075	425	575	450	11,275
2160	CLEAN TEMP DITCH	LF	600	750	225	225	375	200		2,538	213	288	225	5,839
2200	EXCAVATION	CY	14,167	9,318	19,095	332	500	253	1,833	7,445	1,264	4,413	6,893	65,513
2237	DITCHING	LF					1,500							1,500
2242	WATER	MGAL	0.90	1.20	0.40	0.30	0.60	0.30	0.00	4.00	0.30	0.40	0.30	8.7
2265	REMOVE FENCE	LF			363					9,183	251			9,797
2351	GUARDRAIL-STEEL W BEAM-S FACE	LF							228					228
2359	GUARDRAIL CONNECTOR TO CONC MED BARR	EACH							2					2
2367	GUARDRAIL END TREATMENT TYPE 1	EACH							1					1
2369	GUARDRAIL END TREATMENT TYPE 2A	EACH							1					1
2381	REMOVE GUARDRAIL	LF							410					410
2483	CHANNEL LINING CLASS II	TON	72							300				372
2545	CLEARING AND GRUBBING ⑪	LS												1
2568	MOBILIZATION	LS												1
2569	DEMOBILIZATION	LS												1
2585	EDGE KEY	LF	1,152	195	119	231				108		75		1,880
2599	FABRIC-GEOTEXTILE TYPE IV	SY	39,666	32,317	17,323					2,000				91,306
23143EN	DECORATIVE HANDRAIL ⑬	LF								450				450
2650	MAINTAIN & CONTROL TRAFFIC	LS				1								1
2701	TEMP SILT FENCE	LF	1200	1500	450	450	750	400		5,075	425	575	450	11,275
2703	SILT TRAP TYPE A	EACH	11	9	5	0		1		15	1	3	1	46
2704	SILT TRAP TYPE B	EACH	11	9	5	0		1		15	1	3	1	46
2705	SILT TRAP TYPE C	EACH	11	9	5	0		1		15	1	3	1	46
2706	CLEAN SILT TRAP TYPE A	EACH	11	9	5	0		1		15	1	3	1	46
2707	CLEAN SILT TRAP TYPE B	EACH	11	9	5	0		1		15	1	3	1	46
2708	CLEAN SILT TRAP TYPE C	EACH	11	9	5	0		1		15	1	3	1	46
2720	SIDEWALK 4IN CONCRETE	SOYD				80							658	738
2726	STAKING	LS												1
2898	RELOCATE CRASH CUSHION	EACH							2					2
2900	INSTALL TEMP CRASH CUSHION	EACH							2					2
3171	CONCRETE BARRIER WALL TYPE 9T	LF							1,130					1,130
3287	SIDEWALK RAMP TYPE 1	EACH											5	5
3289	SIDEWALK RAMP TYPE 3	EACH				2				11				13
3420	WATER LINE INSTALLATION ③	LF											1,310	1,310
3425	ADJUST WATER VALVE	EACH				1								1
3436	REMOVE-REINSTALL FIRE HYDRANT	EACH				1								1
3496	VALVE-6 IN	EACH											1	1
3551	TAPPING SLEEVE & VALVE	EACH											1	1
4903	REFERENCE MARKER - SPECIAL LEGACY TRAIL MILE MARKER ⑨	EACH								2				2
5950	EROSION CONTROL BLANKET	SY	2,000	2,000	2,000	1,000	1,000	1,000	6,000	8,000	1,000	1,000	500	25,500

NOTES:

- ① GRAVEL STABILIZATION MAT (5433 SY) INCIDENTAL TO ROCK
- ② RODENT & ROCK SCREEN INCIDENTAL TO PIPE
- ③ INCLUDES PAVEMENT REPLACEMENT OF CAMP GROUND ROAD
- ⑨ SEE DETAIL ON PAGE R2D
- ⑪ 7-433.00 29.8 AC, 7-3711.00 22.3 AC
- ⑬ SEE SHEET R2C FOR DETAIL

EARTHWORK QUANTITIES

EXCAVATION INCLUDES:

14,167 CU YDS	SITE #1
9,318 CU YDS	SITE #2
19,095 CU YDS	SITE #3
332 CU YDS	SITE #4
500 CU YDS	SITE #5
253 CU YDS	SITE #6
1,833 CU YDS	IRON WORKS TURN LANES
7,445 CU YDS	LEGACY TRAIL
1,264 CU YDS	CAMP GROUND ROAD TRAIL
4,413 CU YDS	TRAIL HEAD ACCESS ROAD
6,893 CU YDS	TRAIL HEAD

65,513 CU YDS TOTAL EXCAVATION

EMBANKMENT INCLUDES:

18,654 CU YDS	SITE #1
6,831 CU YDS	SITE #2
115 CU YDS	SITE #3
119 CU YDS	SITE #4
0 CU YDS	SITE #5
1,638 CU YDS	SITE #6
47 CU YDS	IRON WORKS TURN LANES
6,804 CU YDS	LEGACY TRAIL
0 CU YDS	CAMP GROUND ROAD TRAIL
2,231 CU YDS	TRAIL HEAD ACCESS ROAD
1,401 CU YDS	TRAIL HEAD

37,840 CU YDS TOTAL EMBANKMENT

NOTE:
SITE #1 EXCAVATION INCLUDES 10,997 CY, SITE #2 EXCAVATION INCLUDES 6,783 CY OF TOP SOIL TO BE REMOVED AND PLACE ON HORSE PARK PROPERTY AT THE DIRECTION OF THE ENGINEER. EMBANKMENT QUANTITIES DO NOT INCLUDE TOP SOIL QUANTITY.

NOTE:
ESTIMATE FOR EARTHWORK CALCULATIONS FOR DESIGN ONLY. THE CONTRACTOR IS ADVISED THAT THE EARTHWORK CALCULATIONS SHOWN ARE FOR INFORMATION ONLY. ASSUMPTIONS FOR SHRINKAGE AND SWELL FACTORS ARE THE CONTRACTOR'S RESPONSIBILITY.

HORSE PARK IMPROVEMENTS
GENERAL SUMMARY

FILE NAME: D:\PW\WORKDIR\TRICK\DWG\300\TR0020HSL.DGN

USER: Trick
DATE PLOTTED: October 16, 2015

E-SHEET NAME:

MicroStation v8.11.9.459

GENERAL SUMMARY

7-433.00 - HORSE PARK
SITE #1-6 & TURN LANES
7-3711.00 - LEGACY TRAIL

COUNTY OF	ITEM NO.	SHEET NO.
FAYETTE SCOTT	7-433.00 7-3711.00	R21

△ PLAN REVISION DATE: 10-16-2015

ITEM	DESCRIPTION	UNIT	SITE #1	SITE #2	SITE #3	SITE #4	SITE #5	SITE #6	IRONWORKS TURN LANES	LEGACY TRAIL	CAMP GROUND RD TRAIL	TRAIL HEAD ACCESS RD	TRAIL HEAD	TOTAL
5952	TEMP MULCH	SY	35,275	30,519	16,450	2,262		4,162		50,342	3,293	11,426	5,907	159,636
5953	TEMP SEEDING AND PROTECTION	SY	26,723	23,120	12,462	1,714		3,153		38,138	2,495	8,656	4,475	120,936
5963	INITIAL FERTILIZER	TON	0.60	0.50	0.30	0.10		0.10		0.80	0.10	0.20	0.10	2.8
5964	20-10-10 FERTILIZER	TON	2.80	2.40	1.30	0.20		0.30		3.80	0.30	0.90	0.50	12.5
5985	SEEDING AND PROTECTION	SY	53,446	46,240	24,924	3,427		6,306		74,276	4,989	17,312	8,950	239,870
5989	SPECIAL SEEDING CROWN VETCH	SY								2,000				2,000
5990	SODDING	SY					750			5,500			1,615	7,865
6407	SBM ALUM SHEET SIGNS .125IN	SF				6.25				219		14.25	22.5	72
6410	STEEL POST TYPE 1	LF				12.00				816		36.00	84.0	948
6510	PAVE STRIPING-TEMP PAINT-4 IN	LF							500					500
6514	PAVE STRIPING-PERM PAINT-4 IN	LF	22,834			520			3,912	20,162	800	2,112	1,202	51,542
6566	PAVE MARKING-THERMO X-WALK-12 IN	LF				206				768		96	144	1,214
6567	PAVE MARKING-THERMO STOP BAR-12IN	LF				28				72	12	12	28	152
6570	PAVE MARKING-PAINT CROSS HATCH	SF											40	40
6574	PAVE MARKING-THERMO CURV ARROW	EACH							11					11
8018	RETAINING WALL - REDI ROCK ④	SF			1,266			2,540						3,806
8100	CONCRETE - CLASS A	CY							65					65
15092	STORM MANHOLE	EACH	1	1										2
30000	REMOVABLE BOLLARD	EACH								12				12
30050	SPEED HUMP ⑦	LS					1							1
30062	REMOVE STEEL PIPE BOLLARD	EACH			4									4
30064	MANUFACTURED RESTROOM BUILDING	EACH										2		2
20985ND	CLEANOUT	EACH		2										2
23837EC	RELOCATE UNDERGROUND ELECTRIC ⑭ △	LF			100			210						310
2008INN	CONNECT TO WATER MAIN ⑤	EACH										1		1
20156EC	FIRE HYDRANT ASSEMBLY	EACH										1		1
20206EC	PAVE MARK HANDICAP SYMBOL	EACH										2		2
20418ED	REMOVE & RELOCATE SIGNS	EACH							3					3
20782NS714	PAVE MARKING THERMO-BIKE	EACH										6		6
21289ED	LONGITUDINAL EDGE KEY	LF							1,985					1,985
22000ED	WOOD PLANK FENCE (2 PLANK) ⑥	LF			422			964						1,386
22000ED	WOOD PLANK FENCE (4 PLANK) ⑥	LF								16,236				16,236
22139NN	CONNECT TO SEWER MAIN	EACH										1		1
22995EN	SANITARY SEWER SERVICE CONNECTION - 4IN	LF										265		265
23086EN	CONCRETE MEDIAN BARRIER TY 9C	LF							300					300
23158ES505	DETECTABLE WARNINGS	SF				32				264	32	192		520
23274ENIIF	TURF REINFORCEMENT MAT TY 1	SY								12,400	1,100	1,400	600	15,500
23758EC	ELECTRICAL SERVICE CONNECTION ⑫ △	EACH										2		2
23802EC	PRECAST VEHICLE STOP	EACH										20		20
23836EC	RELOCATE LIGHT POLE ⑬ △	EACH				2								2
30083	FLAG POLE - 30' INDUSTRIAL GRADE ⑮ △	EACH										6		6
30084	BANNERS	EACH										6		6
30017	LEGACY TRAIL STONE PYLON 12' TALL	EACH										1		1
30085	DRY LAID ROCK SEATWALL	LF										71		71
30020	BIKE RACK	LS										1		1
20065ES724	SHAMARD OAK	EACH										4		4
20014ES724	EASTERN REDBUD	EACH										7		7
20512NS724	RED MAPLE (AUTUMN BLAZE)	EACH										4		4
22694NS724	SHADEMASTER HONEY LOCUST	EACH										5		5
20516NS724	TULIP PAPLAR	EACH										5		5
20566NS724	FLOWERING DOGWOOD	EACH										6		6
23646EC	DOUBLE RED KNOCKOUT ROSES	EACH										26		26
24558ED	ORNAMENTAL GRASS	EACH										57		57
30086	BED PREP	SF										1017		1017

NOTES:

- ④ TREE WELL USE KEystone OTHERWISE USE REDI-ROCK WITH PATTERN AND COLOR AS DIRECTED BY THE ENGINEER
- ⑤ INCLUDES CONNECTION TO BUILDINGS
- ⑥ PLANKS SHALL BE WHITE OAK AND TREATED POST SET IN CONCRETE, BLACK PAINT - LEXINGTON PAINT COMPANY
- ⑦ SPEED TABLE/ HORSE CROSSING AS SHOWN ON PG R2B, 11 LOCATIONS
- ⑧ SEE LANDSCAPING PLAN FOR LOCATION
- ⑩ REMOVAL OF BOLLARDS
- △ ⑫ THE ELECTRICAL SERVICE CONNECTION SHALL INCLUDE ALL MATERIALS REQUIRED TO PROVIDE ELECTRIC TO THE 2 MANUFACTURED BUILDINGS AT THE TRAIL HEAD SITE. ELECTRIC IS AVAILABLE ON CAMPGROUND ROAD AND SHALL BE PROVIDED BY THE CONTRACTOR.
- △ ⑬ THIS SHALL INCLUDE RELOCATING 2 STREET LIGHTS THAT ARE LOCATED ALONG NINA BONNIE (SHEET R12) TO A LOCATION ADJACENT TO THE PROPOSED ROAD. THIS ITEM INCLUDES ALL MATERIAL REQUIRED FOR THE RELOCATION. THE EXISTING LIGHT POLES SHALL BE USED IN THE RELOCATION.
- △ ⑭ INCLUDES THE RELOCATION OF 2 ELECTRIC BOXES & WIRING THAT WERE DISTURBED BY THE PLACEMENT OF THE RETAILING WALL ALONG NINA BONNIE TO A LOCATION BETWEEN THE WALL AND ROADWAY.
- △ ⑮ FLAGPOLES ARE LOCATED AT THE TRAILHEAD AND SHOWN ON THE PLANS. SHEET R70 PROVIDES A DETAIL AND NOTES FOR THE FLAGPOLES.

FILE NAME: D:\PW\WORKDIR\TRICK\DWG\30071\RO0201SL.DWG
 USER: Rick
 DATE PLOTTED: October 16, 2015
 E-SHEET NAME:
 MicroStation v8.11.9.459

GENERAL SUMMARY

7-433.00 - HORSE PARK
SITE #1-6 & TURN LANES
7-3711.00 - LEGACY TRAIL

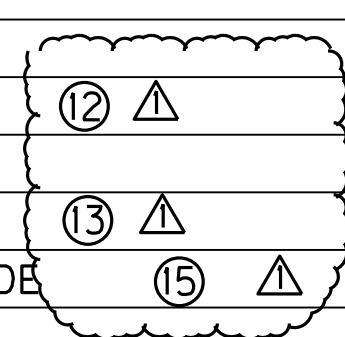
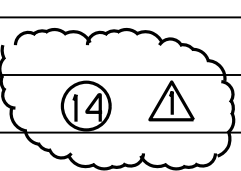
COUNTY OF	ITEM NO.	SHEET NO.
FAYETTE SCOTT	7-433.00 7-3711.00	R21

△ PLAN REVISION DATE: 10-16-2015

ITEM	DESCRIPTION	UNIT	SITE #1	SITE #2	SITE #3	SITE #4	SITE #5	SITE #6	IRONWORKS TURN LANES	LEGACY TRAIL	CAMP GROUND RD TRAIL	TRAIL HEAD ACCESS RD	TRAIL HEAD	TOTAL
5952	TEMP MULCH	SY	35,275	30,519	16,450	2,262		4,162		50,342	3,293	11,426	5,907	159,636
5953	TEMP SEEDING AND PROTECTION	SY	26,723	23,120	12,462	1,714		3,153		38,138	2,495	8,656	4,475	120,936
5963	INITIAL FERTILIZER	TON	0.60	0.50	0.30	0.10		0.10		0.80	0.10	0.20	0.10	2.8
5964	20-10-10 FERTILIZER	TON	2.80	2.40	1.30	0.20		0.30		3.80	0.30	0.90	0.50	12.5
5985	SEEDING AND PROTECTION	SY	53,446	46,240	24,924	3,427		6,306		74,276	4,989	17,312	8,950	239,870
5989	SPECIAL SEEDING CROWN VETCH	SY								2,000				2,000
5990	SODDING	SY					750			5,500			1,615	7,865
6407	SBM ALUM SHEET SIGNS .125IN	SF				6.25				219		14.25	22.5	72
6410	STEEL POST TYPE 1	LF				12.00				816		36.00	84.0	948
6510	PAVE STRIPING-TEMP PAINT-4 IN	LF							500					500
6514	PAVE STRIPING-PERM PAINT-4 IN	LF	22,834			520			3,912	20,162	800	2,112	1,202	51,542
6566	PAVE MARKING-THERMO X-WALK-12 IN	LF				206				768		96	144	1,214
6567	PAVE MARKING-THERMO STOP BAR-12IN	LF				28				72	12	12	28	152
6570	PAVE MARKING-PAINT CROSS HATCH	SF											40	40
6574	PAVE MARKING-THERMO CURV ARROW	EACH							11					11
8018	RETAINING WALL - REDI ROCK ④	SF			1,266			2,540						3,806
8100	CONCRETE - CLASS A	CY							65					65
15092	STORM MANHOLE	EACH	1	1										2
30000	REMOVABLE BOLLARD	EACH								12				12
30050	SPEED HUMP ⑦	LS					1							1
30062	REMOVE STEEL PIPE BOLLARD	EACH			4									4
30064	MANUFACTURED RESTROOM BUILDING	EACH										2		2
20985ND	CLEANOUT	EACH		2										2
23837EC	RELOCATE UNDERGROUND ELECTRIC ⑭ △	LF			100			210						310
2008INN	CONNECT TO WATER MAIN ⑤	EACH										1		1
20156EC	FIRE HYDRANT ASSEMBLY	EACH										1		1
20206EC	PAVE MARK HANDICAP SYMBOL	EACH										2		2
20418ED	REMOVE & RELOCATE SIGNS	EACH							3					3
20782NS714	PAVE MARKING THERMO-BIKE	EACH										6		6
21289ED	LONGITUDINAL EDGE KEY	LF							1,985					1,985
22000ED	WOOD PLANK FENCE (2 PLANK) ⑥	LF			422			964						1,386
22000ED	WOOD PLANK FENCE (4 PLANK) ⑥	LF								16,236				16,236
22139NN	CONNECT TO SEWER MAIN	EACH										1		1
22995EN	SANITARY SEWER SERVICE CONNECTION - 4IN	LF										265		265
23086EN	CONCRETE MEDIAN BARRIER TY 9C	LF							300					300
23158ES505	DETECTABLE WARNINGS	SF				32				264	32	192		520
23274ENIIF	TURF REINFORCEMENT MAT TY 1	SY								12,400	1,100	1,400	600	15,500
23758EC	ELECTRICAL SERVICE CONNECTION ⑫ △	EACH										2		2
23802EC	PRECAST VEHICLE STOP	EACH										20		20
23836EC	RELOCATE LIGHT POLE ⑬ △	EACH				2								2
30083	FLAG POLE - 30' INDUSTRIAL GRADE ⑮ △	EACH										6		6
30084	BANNERS	EACH										6		6
30017	LEGACY TRAIL STONE PYLON 12' TALL	EACH										1		1
30085	DRY LAID ROCK SEATWALL	LF										71		71
30020	BIKE RACK	LS										1		1
20065ES724	SHAMARD OAK	EACH										4		4
20014ES724	EASTERN REDBUD	EACH										7		7
20512NS724	RED MAPLE (AUTUMN BLAZE)	EACH										4		4
22694NS724	SHADEMASTER HONEY LOCUST	EACH										5		5
20516NS724	TULIP PAPLAR	EACH										5		5
20566NS724	FLOWERING DOGWOOD	EACH										6		6
23646EC	DOUBLE RED KNOCKOUT ROSES	EACH										26		26
24558ED	ORNAMENTAL GRASS	EACH										57		57
30086	BED PREP	SF										1017		1017

NOTES:

- ④ TREE WELL USE KEystone OTHERWISE USE REDI-ROCK WITH PATTERN AND COLOR AS DIRECTED BY THE ENGINEER
- ⑤ INCLUDES CONNECTION TO BUILDINGS
- ⑥ PLANKS SHALL BE WHITE OAK AND TREATED POST SET IN CONCRETE, BLACK PAINT - LEXINGTON PAINT COMPANY
- ⑦ SPEED TABLE/ HORSE CROSSING AS SHOWN ON PG R2B, 11 LOCATIONS
- ⑧ SEE LANDSCAPING PLAN FOR LOCATION
- ⑩ REMOVAL OF BOLLARDS
- △ ⑫ THE ELECTRICAL SERVICE CONNECTION SHALL INCLUDE ALL MATERIALS REQUIRED TO PROVIDE ELECTRIC TO THE 2 MANUFACTURED BUILDINGS AT THE TRAIL HEAD SITE. ELECTRIC IS AVAILABLE ON CAMPGROUND ROAD AND SHALL BE PROVIDED BY THE CONTRACTOR.
- △ ⑬ THIS SHALL INCLUDE RELOCATING 2 STREET LIGHTS THAT ARE LOCATED ALONG NINA BONNIE (SHEET R12) TO A LOCATION ADJACENT TO THE PROPOSED ROAD. THIS ITEM INCLUDES ALL MATERIAL REQUIRED FOR THE RELOCATION. THE EXISTING LIGHT POLES SHALL BE USED IN THE RELOCATION.
- △ ⑭ INCLUDES THE RELOCATION OF 2 ELECTRIC BOXES & WIRING THAT WERE DISTURBED BY THE PLACEMENT OF THE RETAILING WALL ALONG NINA BONNIE TO A LOCATION BETWEEN THE WALL AND ROADWAY.
- △ ⑮ FLAGPOLES ARE LOCATED AT THE TRAILHEAD AND SHOWN ON THE PLANS. SHEET R70 PROVIDES A DETAIL AND NOTES FOR THE FLAGPOLES.



FILE NAME: D:\PW\WORKDIR\TRICK\DWG\30071\RO0201SL.DWG
 USER: Rick
 DATE PLOTTED: October 16, 2015
 E-SHEET NAME:
 MicroStation v8.11.9.459

PIPE DRAINAGE SUMMARY

7-433.00 - HORSE PARK
SITE #1-6 & TURN LANES
7-3711.00 - LEGACY TRAIL

COUNTY OF FAYETTE SCOTT	ITEM NO. 7-433.00 7-3711.00	SHEET NO. R2K
-------------------------------	-----------------------------------	------------------

△ PLAN REVISION DATE: 10-15-2015

SHEET NO.	SKEW	COVER HEIGHT	DESIGN PH LEVEL	ENTRANCE PIPE 18"	12" CULVERT PIPE	15" CULVERT PIPE	18" CULVERT PIPE	24" CULVERT PIPE	30" CULVERT PIPE	42" CULVERT PIPE	PIPE CULVERT HEADWALL 12"	PIPE CULVERT HEADWALL 15"	PIPE CULVERT HEADWALL 18"	PIPE CULVERT HEADWALL 24"	PIPE CULVERT HEADWALL 30"	PIPE CULVERT HEADWALL 42"	CURB BOX INLET TY A	CURB BOX INLET TY B	DROP BOX INLET TY 3	DROP BOX INLET TY 6D	DROP BOX INLET TY 10	JUNCTION BOX △	MANHOLE TY A	DROP BOX INLET TY 6E	CONC MED BARRIER BOX INLET TY 9-B-1	REMARKS	
ITEM CODE	441	460	461	462	464	466	469		1200	1202	1204	1208	1210	1214	1456	1480	1496	1529	1541	1650	1756	22767ES710	1621				
UNIT TO BID	LF										EACH																
SITE #1					169		89		303		1		1		1				1			△ 2	△ 1				
SITE #2					200		100	173						1													
SITE #3							201	500					1	2	3											30" DBL HEADWALLS FOR DBL 24" PIPE	
SITE #4	0°						40						2														
SITE #5						95	485					2	4					1						1		2- 15" SLOPED & FLARED HEADWALLS, 1- 18" SLOPED & FLARED HEADWALL, 1-18" SLOPED & PARALLEL HEADWALL 1-18" TRIPLE HEADWALL	
SITE #6																				3							
CAMP GROUND ROAD TRAIL					41																						
TRAIL HEAD ACCESS ROAD									44					2													
IRON WORKS ROAD TURN LANES									134					1											1	45° SKEW HEADWALL	
STA. 75+00																											
STA. 76+00																		1									
STA. 76+50									248									1									
STA. 78+50																		1									
LEGACY TRAIL								21	184											1					1		
STA. 114+00																											
STA. 118+00																											
STA. 123+00						37						2														SLOPED & PARALLEL HEADWALLS	
STA. 126+15						23						2														SLOPED & PARALLEL HEADWALLS	
STA. 131+85	45° RT								65						2											45° SKEW	
STA. 142+75						27						2														SLOPED & PARALLEL HEADWALLS	
STA. 149+80	45° LT								54						2											45° SKEW	
STA. 151+55									33					2													
STA. 153+50									32					2													
STA. 164+23									28					2												SLOPED & FLARED HEADWALLS	
STA. 170+50							28						2													SLOPED & FLARED HEADWALLS	
STA. 191+20							31						2													SLOPED & FLARED HEADWALLS	
STA. 199+75						26						2															
TOTAL PROJECT				41	369	138	915	751	757	65	1	10	7	6	14	2	3	3	2	1	3	△ 2	△ 2	1	1		

JUNCTION BOX △

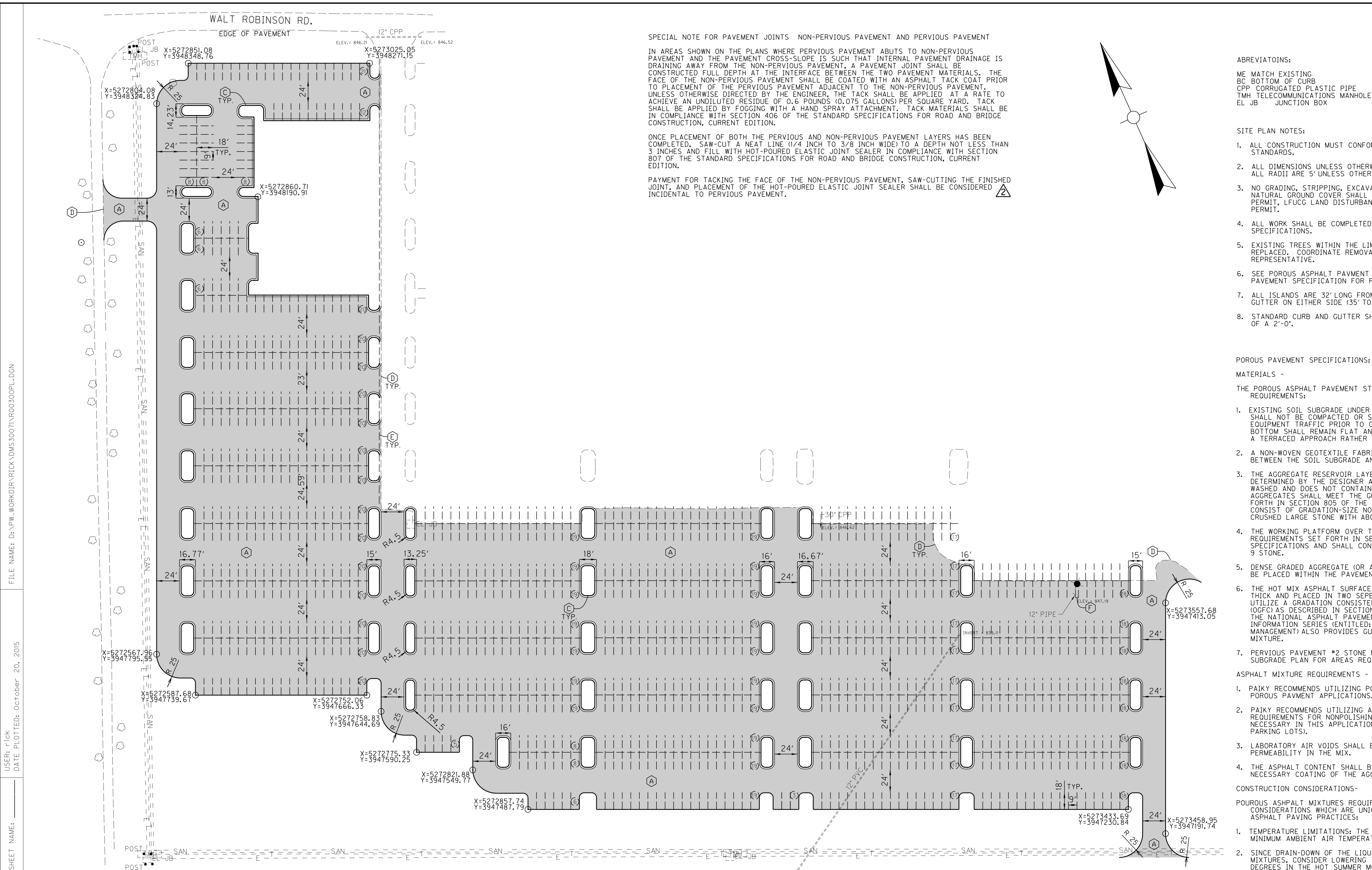
△ 2 △ 1

△ 2 △ 2

FILE NAME: D:\PW\WORKDIR\TRICK\DMS300\TR0020LSU.DGN
 USER: Trick
 DATE PLOTTED: October 15, 2015
 E-SHEET NAME:
 MicroStation v8.11.9.459

COUNTY OF	ITEM NO.	SHEET NO.
FAYETTE	7-433.00	R3

PLAN REVISION DATE: 10-20-2015

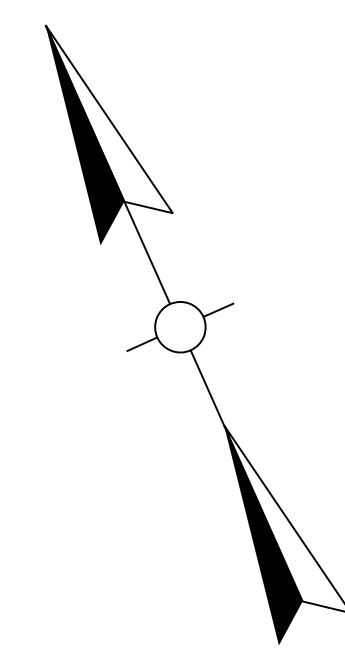


SPECIAL NOTE FOR PAVEMENT JOINTS NON-PERVIOUS PAVEMENT AND PERVIOUS PAVEMENT

IN AREAS SHOWN ON THE PLANS WHERE PERVIOUS PAVEMENT ABUTS TO NON-PERVIOUS PAVEMENT AND THE PAVEMENT CROSS-SLOPE IS SUCH THAT INTERNAL PAVEMENT DRAINAGE IS DRAINING AWAY FROM THE NON-PERVIOUS PAVEMENT, A PAVEMENT JOINT SHALL BE CONSTRUCTED FULL DEPTH AT THE INTERFACE BETWEEN THE TWO PAVEMENT MATERIALS. THE FACE OF THE NON-PERVIOUS PAVEMENT SHALL BE COATED WITH AN ASPHALT TACK COAT PRIOR TO PLACEMENT OF THE PERVIOUS PAVEMENT ADJACENT TO THE NON-PERVIOUS PAVEMENT. UNLESS OTHERWISE DIRECTED BY THE ENGINEER, THE TACK SHALL BE APPLIED AT A RATE TO ACHIEVE AN UNDILUTED RESIDUE OF 0.6 POUNDS (0.075 GALLONS) PER SQUARE YARD. TACK SHALL BE APPLIED BY FOGGING WITH A HAND SPRAY ATTACHMENT. TACK MATERIALS SHALL BE IN COMPLIANCE WITH SECTION 406 OF THE STANDARD SPECIFICATIONS FOR ROAD AND BRIDGE CONSTRUCTION, CURRENT EDITION.

ONCE PLACEMENT OF BOTH THE PERVIOUS AND NON-PERVIOUS PAVEMENT LAYERS HAS BEEN COMPLETED, SAW-CUT A NEAT LINE (1/4 INCH TO 3/8 INCH WIDE) TO A DEPTH NOT LESS THAN 3 INCHES AND FILL WITH HOT-POURED ELASTIC JOINT SEALER IN COMPLIANCE WITH SECTION 807 OF THE STANDARD SPECIFICATIONS FOR ROAD AND BRIDGE CONSTRUCTION, CURRENT EDITION.

PAYMENT FOR TACKING THE FACE OF THE NON-PERVIOUS PAVEMENT, SAW-CUTTING THE FINISHED JOINT, AND PLACEMENT OF THE HOT-POURED ELASTIC JOINT SEALER SHALL BE CONSIDERED INCIDENTAL TO PERVIOUS PAVEMENT.



ABBREVIATIONS:

- ME MATCH EXISTING
- BC BOTTOM OF CURB
- CPP CORRUGATED PLASTIC PIPE
- TMH TELECOMMUNICATIONS MANHOLE
- EL JB JUNCTION BOX

SITE PLAN NOTES:

1. ALL CONSTRUCTION MUST CONFORM TO LFUGC AND COMMONWEALTH OF KENTUCKY STANDARDS.
2. ALL DIMENSIONS UNLESS OTHERWISE NOTED ARE TO THE EDGE OF PAVEMENT. ALL RADII ARE 5' UNLESS OTHERWISE NOTED.
3. NO GRADING, STRIPPING, EXCAVATION, FILLING, OR OTHER DISTURBANCE OF THE NATURAL GROUND COVER SHALL TAKE PLACE PRIOR TO APPROVAL OF KPDES PERMIT, LFUGC LAND DISTURBANCE PERMIT AND CITY OF GEORGETOWN GRADING PERMIT.
4. ALL WORK SHALL BE COMPLETED IN ACCORDANCE WITH THE PROJECT AND KYTC SPECIFICATIONS.
5. EXISTING TREES WITHIN THE LIMITS OF DISTURBANCE MUST BE RELOCATED OR REPLACED. COORDINATE REMOVAL OR REPLACEMENT WITH OWNER'S REPRESENTATIVE.
6. SEE POROUS ASPHALT PAVEMENT DETAIL IN TYPICAL SECTIONS AND POROUS PAVEMENT SPECIFICATION FOR PAVEMENT AND CHOKER COURSE THICKNESSES.
7. ALL ISLANDS ARE 32' LONG FROM FACE OF CURB TO FACE OF CURB WITH 1.5' GUTTER ON EITHER SIDE (35' TOTAL).
8. STANDARD CURB AND GUTTER SHALL BE MODIFIED TO A 1'-6" GUTTER INSTEAD OF A 2'-0".

POROUS PAVEMENT SPECIFICATIONS:

MATERIALS -

THE POROUS ASPHALT PAVEMENT STRUCTURE SHALL MEET THE FOLLOWING REQUIREMENTS:

1. EXISTING SOIL SUBGRADE UNDER THE POROUS ASPHALT PAVEMENT STRUCTURE SHALL NOT BE COMPACTED OR SUBJECT TO EXCESSIVE CONSTRUCTION EQUIPMENT TRAFFIC PRIOR TO GEOTEXTILE AND STONE BED PLACEMENT. THE BOTTOM SHALL REMAIN FLAT AND WHERE ELEVATION CHANGES EXIST, CONSIDER A TERRACED APPROACH RATHER THAN CONSTRUCTING STEEP SLOPES.
2. A NON-WOVEN GEOTEXTILE FABRIC SHALL BE PLACED AS THE SEPARATION LAYER BETWEEN THE SOIL SUBGRADE AND THE STONE RESERVOIR LAYER.
3. THE AGGREGATE RESERVOIR LAYER SHALL BE PLACED AT A THICKNESS AS DETERMINED BY THE DESIGNER AND UTILIZE SINGLE-SIZE STONE THAT HAS BEEN WASHED AND DOES NOT CONTAIN EXCESSIVE DUST OR FINE MATERIALS. AGGREGATES SHALL MEET THE GRADATION AND MATERIAL REQUIREMENTS SET FORTH IN SECTION 805 OF THE KYTC STANDARD SPECIFICATIONS AND SHALL CONSIST OF GRADATION-SIZE NO. 2. THE INTENT IS TO PROVIDE A SINGLE-SIZE CRUSHED LARGE STONE WITH ABOUT 40 PERCENT VOIDS.
4. THE WORKING PLATFORM OVER THE RESERVOIR SHALL ALSO MEET THE REQUIREMENTS SET FORTH IN SECTION 805 OF THE KYTC STANDARD SPECIFICATIONS AND SHALL CONSIST OF EITHER GRADATION-SIZE NO. 8 OR NO. 9 STONE.
5. DENSE GRADED AGGREGATE (OR ANY OTHER IMPERMEABLE MATERIALS) SHALL NOT BE PLACED WITHIN THE PAVEMENT STRUCTURE.
6. THE HOT MIX ASPHALT SURFACE LAYER SHALL BE AT LEAST FIVE (5) INCHES THICK AND PLACED IN TWO SEPARATE LIFTS. THE ASPHALT MIXTURE SHALL UTILIZE A GRADATION CONSISTENT WITH AN OPEN-GRADED FRICTION COURSE (OGFC) AS DESCRIBED IN SECTION 404 OF THE KYTC STANDARD SPECIFICATIONS. THE NATIONAL ASPHALT PAVEMENT ASSOCIATION (NAPA) PUBLICATION INFORMATION SERIES (ENTITLED: POROUS ASPHALT PAVEMENT FOR STORMWATER MANAGEMENT) ALSO PROVIDES GUIDANCE ON THE GRADATION FOR THIS ASPHALT MIXTURE.
7. PERVIOUS PAVEMENT #2 STONE MINIMUM DEPTH SHALL BE 12 INCHES. SEE SUBGRADE PLAN FOR AREAS REQUIRING GREATER DEPTH.

ASPHALT MIXTURE REQUIREMENTS -

1. PAIKY RECOMMENDS UTILIZING PG 76-22 LIQUID ASPHALT BINDER IN THESE POROUS PAVEMENT APPLICATIONS.
2. PAIKY RECOMMENDS UTILIZING A 'D' TYPE AGGREGATE (THE TYPE 'A' REQUIREMENTS FOR NONPOLISHING AGGREGATES IN SECTION 404 ARE NOT NECESSARY IN THIS APPLICATION DUE TO THE LOW SPEEDS EXPECTED IN PARKING LOTS).
3. LABORATORY AIR VOIDS SHALL BE 16 PERCENT OR GREATER TO ASSURE PERMEABILITY IN THE MIX.
4. THE ASPHALT CONTENT SHALL BE 6.0 PERCENT OR GREATER TO PROVIDE THE NECESSARY COATING OF THE AGGREGATES AND FOR LONG-TERM DURABILITY.

CONSTRUCTION CONSIDERATIONS-

POROUS ASPHALT MIXTURES REQUIRE SOME SPECIAL CONSTRUCTION CONSIDERATIONS WHICH ARE UNIQUE AND DIFFERENT FROM CONVENTIONAL ASPHALT PAVING PRACTICES:

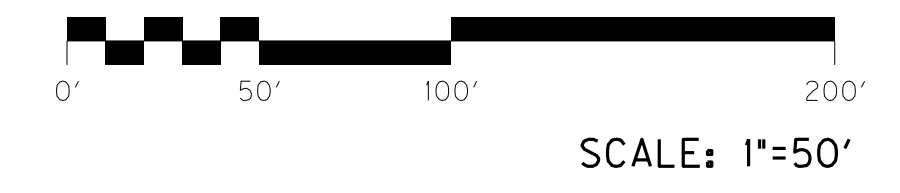
1. TEMPERATURE LIMITATIONS: THE KYTC STANDARD SPECIFICATIONS REQUIRE A MINIMUM AMBIENT AIR TEMPERATURE OF 60 DEGREES FOR PLACEMENT OF OGFC.
2. SINCE DRAIN-DOWN OF THE LIQUID ASPHALT CAN OCCUR WITH THESE TYPES OF MIXTURES, CONSIDER LOWERING THE PLANT TEMPERATURES AS MUCH AS 50 DEGREES IN THE HOT SUMMER MONTHS TO AVOID THIS PROBLEM.
3. UTILIZE CONVENTIONAL PAVING EQUIPMENT FOR PLACEMENT OF THE POROUS ASPHALT LAYER.
4. IN ORDER TO SEAT THE AGGREGATE WITHIN THE MIXTURE, MAKE TWO OR THREE PASSES WITH A SMALL ROLLER IMMEDIATELY AFTER PLACEMENT. MORE FREQUENT ROLLING TENDS TO REDUCE THE INFILTRATION CAPABILITIES OF THE POROUS MIXTURE. AFTER FINAL ROLLING, TRAFFIC SHOULD BE RESTRICTED FOR THE FIRST 24 HOURS WHEN THE PAVEMENT TENDS TO BE TENDER. CARE MUST BE TAKEN SO THAT THE POROSITY OF THE PAVEMENT IS NOT COMPROMISED.

SITE STATISTICS:
ADDITIONAL PARKING PROVIDED 1022 SPACES

- KEY NOTES:**
- (A) PERVIOUS PAVEMENT
 - (B) NOT USED
 - (C) 2' CURB AND GUTTER
 - (D) SEE SPECIAL NOTE
 - (E) REMOVE EXISTING CURB BETWEEN ISLANDS
 - (F) 3' HATCHED AREA FOR LIGHT POLE (TO REMAIN)

BEFORE YOU DIG

The contractor is instructed to call 1-800-752-6007 to reach KY 811, the one-call system for information on the location of existing underground utilities. The call is to be placed a minimum of two (2) and no more than ten (10) business days prior to excavation. The contractor should be aware that owners of underground facilities are not required to be members of the KY 811 one-call Before-U-Dig (BUD) service. The contractor must coordinate excavation with the utility owners, including those whom do not subscribe to KY 811. It may be necessary for the contractor to contact the County Court Clerk to determine what utility companies have facilities in the area.



HORSE PARK IMPROVEMENTS
AREA 1
SITE PLAN

FILE NAME: D:\PW\WORKDIR\TRICK\DMS300\TTR00300PL.DGN

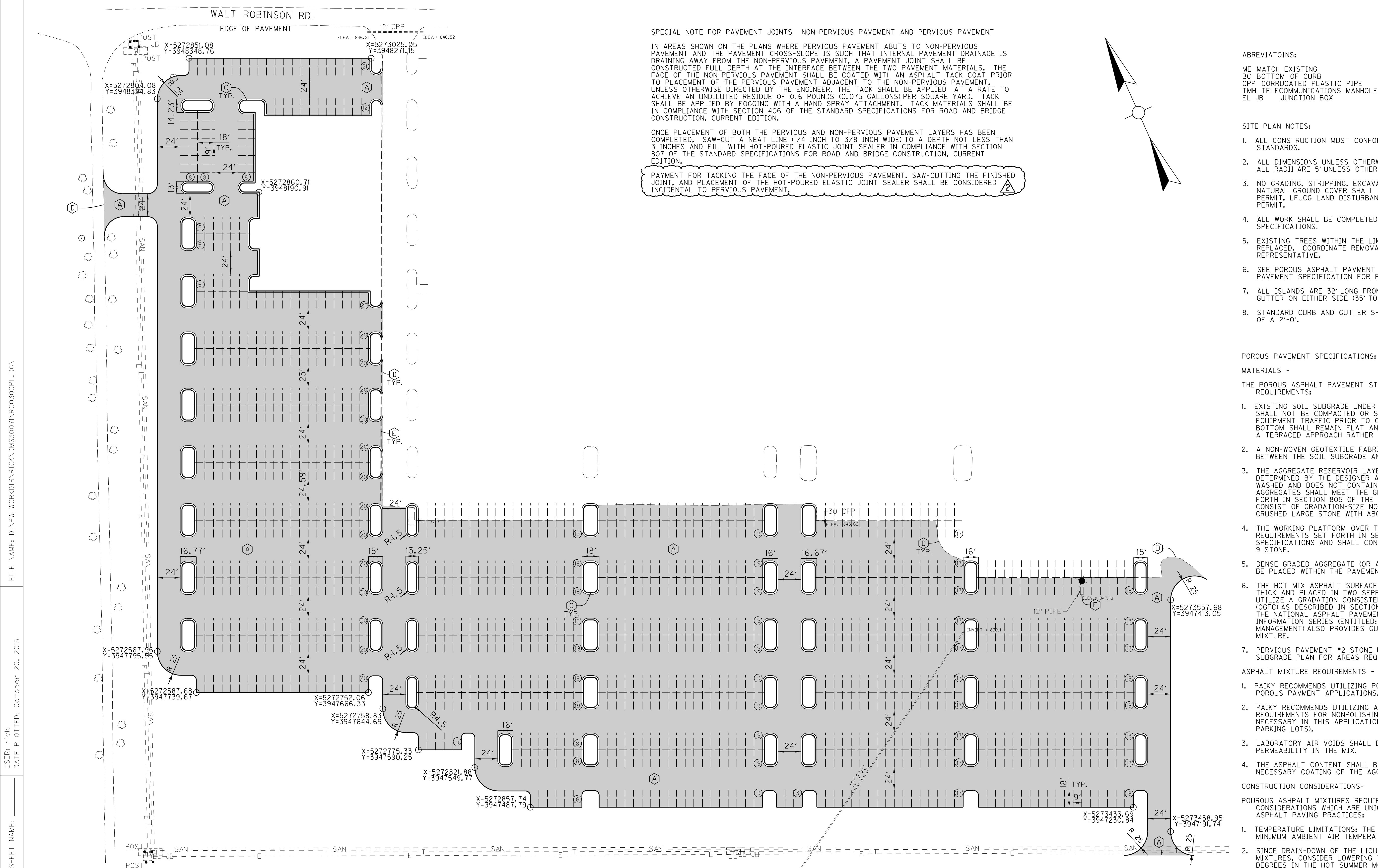
USER: trick
DATE PLOTTED: October 20, 2015

E-SHEET NAME:

MicroStation v8.11.9.459

COUNTY OF	ITEM NO.	SHEET NO.
FAYETTE	7-433.00	R3

PLAN REVISION DATE: 10-20-2015

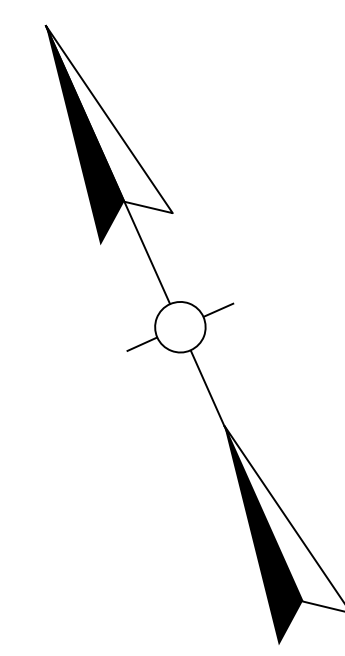


SPECIAL NOTE FOR PAVEMENT JOINTS NON-PERVIOUS PAVEMENT AND PERVIOUS PAVEMENT

IN AREAS SHOWN ON THE PLANS WHERE PERVIOUS PAVEMENT ABUTS TO NON-PERVIOUS PAVEMENT AND THE PAVEMENT CROSS-SLOPE IS SUCH THAT INTERNAL PAVEMENT DRAINAGE IS DRAINING AWAY FROM THE NON-PERVIOUS PAVEMENT, A PAVEMENT JOINT SHALL BE CONSTRUCTED FULL DEPTH AT THE INTERFACE BETWEEN THE TWO PAVEMENT MATERIALS. THE FACE OF THE NON-PERVIOUS PAVEMENT SHALL BE COATED WITH AN ASPHALT TACK COAT PRIOR TO PLACEMENT OF THE PERVIOUS PAVEMENT ADJACENT TO THE NON-PERVIOUS PAVEMENT. UNLESS OTHERWISE DIRECTED BY THE ENGINEER, THE TACK SHALL BE APPLIED AT A RATE TO ACHIEVE AN UNDILUTED RESIDUE OF 0.6 POUNDS (0.075 GALLONS) PER SQUARE YARD. TACK SHALL BE APPLIED BY FOGGING WITH A HAND SPRAY ATTACHMENT. TACK MATERIALS SHALL BE IN COMPLIANCE WITH SECTION 406 OF THE STANDARD SPECIFICATIONS FOR ROAD AND BRIDGE CONSTRUCTION, CURRENT EDITION.

ONCE PLACEMENT OF BOTH THE PERVIOUS AND NON-PERVIOUS PAVEMENT LAYERS HAS BEEN COMPLETED, SAW-CUT A NEAT LINE (1/4 INCH TO 3/8 INCH WIDE) TO A DEPTH NOT LESS THAN 3 INCHES AND FILL WITH HOT-POURED ELASTIC JOINT SEALER IN COMPLIANCE WITH SECTION 807 OF THE STANDARD SPECIFICATIONS FOR ROAD AND BRIDGE CONSTRUCTION, CURRENT EDITION.

PAYMENT FOR TACKING THE FACE OF THE NON-PERVIOUS PAVEMENT, SAW-CUTTING THE FINISHED JOINT, AND PLACEMENT OF THE HOT-POURED ELASTIC JOINT SEALER SHALL BE CONSIDERED INCIDENTAL TO PERVIOUS PAVEMENT.



ABBREVIATIONS:

- ME MATCH EXISTING
- BC BOTTOM OF CURB
- CPP CORRUGATED PLASTIC PIPE
- TMH TELECOMMUNICATIONS MANHOLE
- EL JB JUNCTION BOX

SITE PLAN NOTES:

1. ALL CONSTRUCTION MUST CONFORM TO LFUGC AND COMMONWEALTH OF KENTUCKY STANDARDS.
2. ALL DIMENSIONS UNLESS OTHERWISE NOTED ARE TO THE EDGE OF PAVEMENT. ALL RADII ARE 5' UNLESS OTHERWISE NOTED.
3. NO GRADING, STRIPPING, EXCAVATION, FILLING, OR OTHER DISTURBANCE OF THE NATURAL GROUND COVER SHALL TAKE PLACE PRIOR TO APPROVAL OF KPDES PERMIT, LFUGC LAND DISTURBANCE PERMIT AND CITY OF GEORGETOWN GRADING PERMIT.
4. ALL WORK SHALL BE COMPLETED IN ACCORDANCE WITH THE PROJECT AND KYTC SPECIFICATIONS.
5. EXISTING TREES WITHIN THE LIMITS OF DISTURBANCE MUST BE RELOCATED OR REPLACED. COORDINATE REMOVAL OR REPLACEMENT WITH OWNER'S REPRESENTATIVE.
6. SEE POROUS ASPHALT PAVEMENT DETAIL IN TYPICAL SECTIONS AND POROUS PAVEMENT SPECIFICATION FOR PAVEMENT AND CHOKER COURSE THICKNESSES.
7. ALL ISLANDS ARE 32' LONG FROM FACE OF CURB TO FACE OF CURB WITH 1.5' GUTTER ON EITHER SIDE (35' TOTAL).
8. STANDARD CURB AND GUTTER SHALL BE MODIFIED TO A 1'-6" GUTTER INSTEAD OF A 2'-0".

POROUS PAVEMENT SPECIFICATIONS:

MATERIALS -

THE POROUS ASPHALT PAVEMENT STRUCTURE SHALL MEET THE FOLLOWING REQUIREMENTS:

1. EXISTING SOIL SUBGRADE UNDER THE POROUS ASPHALT PAVEMENT STRUCTURE SHALL NOT BE COMPACTED OR SUBJECT TO EXCESSIVE CONSTRUCTION EQUIPMENT TRAFFIC PRIOR TO GEOTEXTILE AND STONE BED PLACEMENT. THE BOTTOM SHALL REMAIN FLAT AND WHERE ELEVATION CHANGES EXIST, CONSIDER A TERRACED APPROACH RATHER THAN CONSTRUCTING STEEP SLOPES.
2. A NON-WOVEN GEOTEXTILE FABRIC SHALL BE PLACED AS THE SEPARATION LAYER BETWEEN THE SOIL SUBGRADE AND THE STONE RESERVOIR LAYER.
3. THE AGGREGATE RESERVOIR LAYER SHALL BE PLACED AT A THICKNESS AS DETERMINED BY THE DESIGNER AND UTILIZE SINGLE-SIZE STONE THAT HAS BEEN WASHED AND DOES NOT CONTAIN EXCESSIVE DUST OR FINE MATERIALS. AGGREGATES SHALL MEET THE GRADATION AND MATERIAL REQUIREMENTS SET FORTH IN SECTION 805 OF THE KYTC STANDARD SPECIFICATIONS AND SHALL CONSIST OF GRADATION-SIZE NO. 2. THE INTENT IS TO PROVIDE A SINGLE-SIZE CRUSHED LARGE STONE WITH ABOUT 40 PERCENT VOIDS.
4. THE WORKING PLATFORM OVER THE RESERVOIR SHALL ALSO MEET THE REQUIREMENTS SET FORTH IN SECTION 805 OF THE KYTC STANDARD SPECIFICATIONS AND SHALL CONSIST OF EITHER GRADATION-SIZE NO. 8 OR NO. 9 STONE.
5. DENSE GRADED AGGREGATE (OR ANY OTHER IMPERMEABLE MATERIALS) SHALL NOT BE PLACED WITHIN THE PAVEMENT STRUCTURE.
6. THE HOT MIX ASPHALT SURFACE LAYER SHALL BE AT LEAST FIVE (5) INCHES THICK AND PLACED IN TWO SEPARATE LIFTS. THE ASPHALT MIXTURE SHALL UTILIZE A GRADATION CONSISTENT WITH AN OPEN-GRADED FRICTION COURSE (OGFC) AS DESCRIBED IN SECTION 404 OF THE KYTC STANDARD SPECIFICATIONS. THE NATIONAL ASPHALT PAVEMENT ASSOCIATION (NAPA) PUBLICATION INFORMATION SERIES (ENTITLED: POROUS ASPHALT PAVEMENT FOR STORMWATER MANAGEMENT) ALSO PROVIDES GUIDANCE ON THE GRADATION FOR THIS ASPHALT MIXTURE.
7. PERVIOUS PAVEMENT #2 STONE MINIMUM DEPTH SHALL BE 12 INCHES. SEE SUBGRADE PLAN FOR AREAS REQUIRING GREATER DEPTH.

ASPHALT MIXTURE REQUIREMENTS -

1. PAIKY RECOMMENDS UTILIZING PG 76-22 LIQUID ASPHALT BINDER IN THESE POROUS PAVEMENT APPLICATIONS.
2. PAIKY RECOMMENDS UTILIZING A 'D' TYPE AGGREGATE (THE TYPE 'A' REQUIREMENTS FOR NONPOLISHING AGGREGATES IN SECTION 404 ARE NOT NECESSARY IN THIS APPLICATION DUE TO THE LOW SPEEDS EXPECTED IN PARKING LOTS).
3. LABORATORY AIR VOIDS SHALL BE 16 PERCENT OR GREATER TO ASSURE PERMEABILITY IN THE MIX.
4. THE ASPHALT CONTENT SHALL BE 6.0 PERCENT OR GREATER TO PROVIDE THE NECESSARY COATING OF THE AGGREGATES AND FOR LONG-TERM DURABILITY.

CONSTRUCTION CONSIDERATIONS-

POROUS ASPHALT MIXTURES REQUIRE SOME SPECIAL CONSTRUCTION CONSIDERATIONS WHICH ARE UNIQUE AND DIFFERENT FROM CONVENTIONAL ASPHALT PAVING PRACTICES:

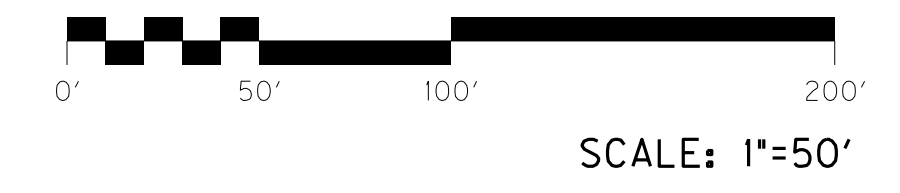
1. TEMPERATURE LIMITATIONS: THE KYTC STANDARD SPECIFICATIONS REQUIRE A MINIMUM AMBIENT AIR TEMPERATURE OF 60 DEGREES FOR PLACEMENT OF OGFC.
2. SINCE DRAIN-DOWN OF THE LIQUID ASPHALT CAN OCCUR WITH THESE TYPES OF MIXTURES, CONSIDER LOWERING THE PLANT TEMPERATURES AS MUCH AS 50 DEGREES IN THE HOT SUMMER MONTHS TO AVOID THIS PROBLEM.
3. UTILIZE CONVENTIONAL PAVING EQUIPMENT FOR PLACEMENT OF THE POROUS ASPHALT LAYER.
4. IN ORDER TO SEAT THE AGGREGATE WITHIN THE MIXTURE, MAKE TWO OR THREE PASSES WITH A SMALL ROLLER IMMEDIATELY AFTER PLACEMENT. MORE FREQUENT ROLLING TENDS TO REDUCE THE INFILTRATION CAPABILITIES OF THE POROUS MIXTURE. AFTER FINAL ROLLING, TRAFFIC SHOULD BE RESTRICTED FOR THE FIRST 24 HOURS WHEN THE PAVEMENT TENDS TO BE TENDER. CARE MUST BE TAKEN SO THAT THE POROSITY OF THE PAVEMENT IS NOT COMPROMISED.

BEFORE YOU DIG

The contractor is instructed to call 1-800-752-6007 to reach KY 811, the one-call system for information on the location of existing underground utilities. The call is to be placed a minimum of two (2) and no more than ten (10) business days prior to excavation. The contractor should be aware that owners of underground facilities are not required to be members of the KY 811 one-call Before-U-Dig (BUD) service. The contractor must coordinate excavation with the utility owners, including those whom do not subscribe to KY 811. It may be necessary for the contractor to contact the County Court Clerk to determine what utility companies have facilities in the area.

- KEY NOTES:**
- (A) PERVIOUS PAVEMENT
 - (B) NOT USED
 - (C) 2' CURB AND GUTTER
 - (D) SEE SPECIAL NOTE
 - (E) REMOVE EXISTING CURB BETWEEN ISLANDS
 - (F) 3' HATCHED AREA FOR LIGHT POLE (TO REMAIN)

SITE STATISTICS:
ADDITIONAL PARKING PROVIDED 1022 SPACES



**HORSE PARK IMPROVEMENTS
AREA 1
SITE PLAN**

FILE NAME: D:\PW\WORKDIR\TRICK\DWG\3000\TR00300PL.DGN

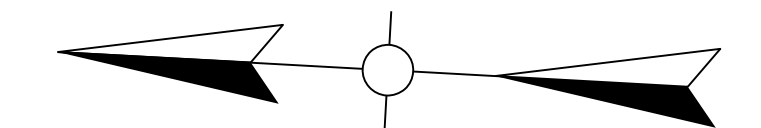
USER: trick
DATE PLOTTED: October 20, 2015

E-SHEET NAME:

MicroStation v8.11.9.459

COUNTY OF	ITEM NO.	SHEET NO.
FAYETTE/SCOTT	7-433.00	R6

PLAN REVISION DATE: 10-20-2015



ABBREVIATIONS:
 ME MATCH EXISTING
 BC BOTTOM OF CURB
 CPP CORRUGATED PLASTIC PIPE
 TMH TELECOMMUNICATIONS MANHOLE
 DND DO NOT DISTURB

SPECIAL NOTE FOR PAVEMENT JOINTS NON-PERVIOUS PAVEMENT AND PERVIOUS PAVEMENT

IN AREAS SHOWN ON THE PLANS WHERE PERVIOUS PAVEMENT ABUTS TO NON-PERVIOUS PAVEMENT AND THE PAVEMENT CROSS-SLOPE IS SUCH THAT INTERNAL PAVEMENT DRAINAGE IS DRAINING AWAY FROM THE NON-PERVIOUS PAVEMENT, A PAVEMENT JOINT SHALL BE CONSTRUCTED FULL DEPTH AT THE INTERFACE BETWEEN THE TWO PAVEMENT MATERIALS. THE FACE OF THE NON-PERVIOUS PAVEMENT SHALL BE COATED WITH AN ASPHALT TACK COAT PRIOR TO PLACEMENT OF THE PERVIOUS PAVEMENT ADJACENT TO THE NON-PERVIOUS PAVEMENT. UNLESS OTHERWISE DIRECTED BY THE ENGINEER, THE TACK SHALL BE APPLIED AT A RATE TO ACHIEVE AN UNDILUTED RESIDUE OF 0.6 POUNDS (0.075 GALLONS) PER SQUARE YARD. TACK SHALL BE APPLIED BY FOGGING WITH A HAND SPRAY ATTACHMENT. TACK MATERIALS SHALL BE IN COMPLIANCE WITH SECTION 406 OF THE STANDARD SPECIFICATIONS FOR ROAD AND BRIDGE CONSTRUCTION, CURRENT EDITION.

ONCE PLACEMENT OF BOTH THE PERVIOUS AND NON-PERVIOUS PAVEMENT LAYERS HAS BEEN COMPLETED, SAW-CUT A NEAT LINE (1/4 INCH TO 3/8 INCH WIDE) TO A DEPTH NOT LESS THAN 3 INCHES AND FILL WITH HOT-POURED ELASTIC JOINT SEALER IN COMPLIANCE WITH SECTION 807 OF THE STANDARD SPECIFICATIONS FOR ROAD AND BRIDGE CONSTRUCTION, CURRENT EDITION.

PAYMENT FOR TACKING THE FACE OF THE NON-PERVIOUS PAVEMENT, SAW-CUTTING THE FINISHED JOINT, AND PLACEMENT OF THE HOT-POURED ELASTIC JOINT SEALER SHALL BE CONSIDERED INCIDENTAL TO PERVIOUS PAVEMENT.

SITE PLAN NOTES:

- ALL CONSTRUCTION MUST CONFORM TO LFUGC, CITY OF GEORGETOWN, AND COMMONWEALTH OF KENTUCKY STANDARDS.
- ALL DIMENSIONS UNLESS OTHERWISE NOTED ARE TO THE FACE OF CURB OR EDGE OF PAVEMENT. ALL RADII ARE 4' UNLESS OTHERWISE NOTED.
- NO GRADING, STRIPPING, EXCAVATION, FILLING, OR OTHER DISTURBANCE OF THE NATURAL GROUND COVER SHALL TAKE PLACE PRIOR TO APPROVAL OF KPDES PERMIT, LFUGC LAND DISTURBANCE PERMIT AND CITY OF GEORGETOWN GRADING PERMIT.
- ALL WORK SHALL BE COMPLETED IN ACCORDANCE WITH THE PROJECT AND KYTC SPECIFICATIONS.
- SEE POROUS ASPHALT PAVMENT DETAIL IN TYPICAL SECTIONS AND POROUS PAVEMENT SPECIFICATION FOR PAVEMENT AND CHOKER COURSE THICKNESSES.
- THERE ARE 818 PROPOSED PARKING SPACES. ALL PARKING SPACES ARE 9'x18'
- STANDARD CURB AND GUTTER SHALL BE MODIFIED TO A 1'-6" GUTTER INSTEAD OF A 2'-0".

POROUS PAVEMENT SPECIFICATIONS:

MATERIALS -
 THE POROUS ASPHALT PAVEMENT STRUCTURE SHALL MEET THE FOLLOWING REQUIREMENTS:

- EXISTING SOIL SUBGRADE UNDER THE POROUS ASPHALT PAVEMENT STRUCTURE SHALL NOT BE COMPACTED OR SUBJECT TO EXCESSIVE CONSTRUCTION EQUIPMENT TRAFFIC PRIOR TO GEOTEXTILE AND STONE BED PLACEMENT. THE BOTTOM SHALL REMAIN FLAT AND WHERE ELEVATION CHANGES EXIST, CONSIDER A TERRACED APPROACH RATHER THAN CONSTRUCTING STEEP SLOPES.
- A NON-WOVEN GEOTEXTILE FABRIC SHALL BE PLACED AS THE SEPARATION LAYER BETWEEN THE SOIL SUBGRADE AND THE STONE RESERVOIR LAYER.
- THE AGGREGATE RESERVOIR LAYER SHALL BE PLACED AT A THICKNESS AS DETERMINED BY THE DESIGNER AND UTILIZE SINGLE-SIZE STONE THAT HAS BEEN WASHED AND DOES NOT CONTAIN EXCESSIVE DUST OR FINE MATERIALS. AGGREGATES SHALL MEET THE GRADATION AND MATERIAL REQUIREMENTS SET FORTH IN SECTION 805 OF THE KYTC STANDARD SPECIFICATIONS AND SHALL CONSIST OF GRADATION-SIZE NO. 2. THE INTENT IS TO PROVIDE A SINGLE-SIZE CRUSHED LARGE STONE WITH ABOUT 40 PERCENT VOIDS.
- THE WORKING PLATFORM OVER THE RESERVOIR SHALL ALSO MEET THE REQUIREMENTS SET FORTH IN SECTION 805 OF THE KYTC STANDARD SPECIFICATIONS AND SHALL CONSIST OF EITHER GRADATION-SIZE NO. 8 OR NO. 9 STONE.
- DENSE GRADED AGGREGATE (OR ANY OTHER IMPERMEABLE MATERIALS) SHALL NOT BE PLACED WITHIN THE PAVEMENT STRUCTURE.
- THE HOT MIX ASPHALT SURFACE LAYER SHALL BE AT LEAST FIVE (5) INCHES THICK AND PLACED IN TWO SEPERATE LIFTS. THE ASPHALT MIXTURE SHALL UTILIZE A GRADATION CONSISTENT WITH AN OPEN-GRADED FRICTION COURSE (OGFC) AS DESCRIBED IN SECTION 404 OF THE KYTC STANDARD SPECIFICATIONS. THE NATIONAL ASPHALT PAVEMENT ASSOCIATION (NAPA) PUBLICATION INFORMATION SERIES ENTITLED: POROUS ASPHALT PAVEMENT FOR STORMWATER MANAGEMENT ALSO PROVIDES GUIDANCE ON THE GRADATION FOR THIS ASPHALT MIXTURE.
- PERVIOUS PAVEMENT #2 STONE MINIMUM DEPTH SHALL BE 12 INCHES. SEE SUBGRADE PLAN FOR AREAS REQUIRING GREATER DEPTH.

ASPHALT MIXTURE REQUIREMENTS -

- PAIKY RECOMMENDS UTILIZING PG 76-22 LIQUID ASPHALT BINDER IN THESE POROUS PAVMENT APPLICATIONS.
- PAIKY RECOMMENDS UTILIZING A 'D' TYPE AGGREGATE (THE TYPE 'A' REQUIREMENTS FOR NONPOLISHING AGGREGATES IN SECTIN 404 ARE NOT NECESSARY IN THIS APPLICATION DUE TO THE LOW SPEEDS EXPECTED IN PARKING LOTS).
- LABORATORY AIR VOIDS SHALL BE 16 PERCENT OR GREATER TO ASSURE PERMEABILITY IN THE MIX.
- THE ASPHALT CONTENT SHALL BE 6.0 PERCENT OR GREATER TO PROVIDE THE NECESSARY COATING OF THE AGGREGATES AND FOR LONG-TERM DURABILITY.

CONSTRUCTION CONSIDERATIONS-

POURIOUS ASPHALT MIXTURES REQUIRE SOME SPECIAL CONSTRUCTION CONSIDERATIONS WHICH ARE UNIQUE AND DIFFERENT FROM CONVENTIONAL ASPHALT PAVING PRACTICES:

- TEMPERATURE LIMITATIONS: THE KYTC STANDARD SPECIFICATIONS REQUIRE A MINIMUM AMBIENT AIR TEMPERATURE OF 60 DEGREES FOR PLACEMENT OF OGFC.
- SINCE DRAIN-DOWN OF THE LIQUID ASPHALT CAN OCCUR WITH THESE TYPES OF MIXTURES, CONSIDER LOWERING THE PLANT TEMPERATURES AS MUCH AS 50 DEGREES IN THE HOT SUMMER MONTHS TO AVOID THIS PROBLEM.
- UTILIZE CONVENTIONAL PAVING EQUIPMENT FOR PLACEMENT OF THE POROUS ASPHALT LAYER.
- IN ORDER TO SEAT THE AGGREGATE WITHIN THE MIXTURE, MAKE TWO OR THREE PASSES WITH A SMALL ROLLER IMMEDIATELY AFTER PLACEMENT. MORE FREQUENT ROLLING TENDS TO REDUCE THE INFILTRATION CAPABILITIES OF THE POROUS MIXTURE. AFTER FINAL ROLLING, TRAFFIC SHOULD BE RESTRICTED FOR THE FIRST 24 HOURS WHEN THE PAVEMENT TENDS TO BE TENDER. CARE MUST BE TAKEN SO THAT THE POROSITY OF THE PAVMENT IS NOT COMPRIMISED.



KEY NOTES:

- (A) PERVIOUS PAVEMENT
- (B) SEE SPECIAL NOTE

BEFORE YOU DIG

The contractor is instructed to call 1-800-752-6007 to reach KY 811, the one-call system for information on the location of existing underground utilities. The call is to be placed a minimum of two (2) and no more than ten (10) business days prior to excavation. The contractor should be aware that owners of underground facilities are not required to be members of the KY 811 one-call Before-U-Dig (BUD) service. The contractor must coordinate excavation with the utility owners, including those whom do not subscribe to KY 811. It may be necessary for the contractor to contact the County Court Clerk to determine what utility companies have facilities in the area.



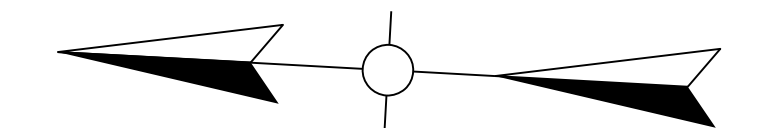
**HORSE PARK IMPROVEMENTS
 AREA 2
 SITE PLAN**

FILE NAME: D:\PW\WORKDIR\TRICK\DMS300\TVR060600PL.DGN

USER: Trick
 DATE PLOTTED: October 20, 2015

E-SHEET NAME:

MicroStation v8.11.9.459



ABBREVIATIONS:
 ME MATCH EXISTING
 BC BOTTOM OF CURB
 CPP CORRUGATED PLASTIC PIPE
 TMH TELECOMMUNICATIONS MANHOLE
 DND DO NOT DISTURB

SPECIAL NOTE FOR PAVEMENT JOINTS NON-PERVIOUS PAVEMENT AND PERVIOUS PAVEMENT

IN AREAS SHOWN ON THE PLANS WHERE PERVIOUS PAVEMENT ABUTS TO NON-PERVIOUS PAVEMENT AND THE PAVEMENT CROSS-SLOPE IS SUCH THAT INTERNAL PAVEMENT DRAINAGE IS DRAINING AWAY FROM THE NON-PERVIOUS PAVEMENT, A PAVEMENT JOINT SHALL BE CONSTRUCTED FULL DEPTH AT THE INTERFACE BETWEEN THE TWO PAVEMENT MATERIALS. THE FACE OF THE NON-PERVIOUS PAVEMENT SHALL BE COATED WITH AN ASPHALT TACK COAT PRIOR TO PLACEMENT OF THE PERVIOUS PAVEMENT ADJACENT TO THE NON-PERVIOUS PAVEMENT. UNLESS OTHERWISE DIRECTED BY THE ENGINEER, THE TACK SHALL BE APPLIED AT A RATE TO ACHIEVE AN UNDILUTED RESIDUE OF 0.6 POUNDS (0.075 GALLONS) PER SQUARE YARD. TACK SHALL BE APPLIED BY FOGGING WITH A HAND SPRAY ATTACHMENT. TACK MATERIALS SHALL BE IN COMPLIANCE WITH SECTION 406 OF THE STANDARD SPECIFICATIONS FOR ROAD AND BRIDGE CONSTRUCTION, CURRENT EDITION.

ONCE PLACEMENT OF BOTH THE PERVIOUS AND NON-PERVIOUS PAVEMENT LAYERS HAS BEEN COMPLETED, SAW-CUT A NEAT LINE (1/4 INCH TO 3/8 INCH WIDE) TO A DEPTH NOT LESS THAN 3 INCHES AND FILL WITH HOT-POURED ELASTIC JOINT SEALER IN COMPLIANCE WITH SECTION 807 OF THE STANDARD SPECIFICATIONS FOR ROAD AND BRIDGE CONSTRUCTION, CURRENT EDITION.

PAYMENT FOR TACKING THE FACE OF THE NON-PERVIOUS PAVEMENT, SAW-CUTTING THE FINISHED JOINT, AND PLACEMENT OF THE HOT-POURED ELASTIC JOINT SEALER SHALL BE CONSIDERED INCIDENTAL TO PERVIOUS PAVEMENT.

SITE PLAN NOTES:

- ALL CONSTRUCTION MUST CONFORM TO LFUGC, CITY OF GEORGETOWN, AND COMMONWEALTH OF KENTUCKY STANDARDS.
- ALL DIMENSIONS UNLESS OTHERWISE NOTED ARE TO THE FACE OF CURB OR EDGE OF PAVEMENT. ALL RADII ARE 4' UNLESS OTHERWISE NOTED.
- NO GRADING, STRIPPING, EXCAVATION, FILLING, OR OTHER DISTURBANCE OF THE NATURAL GROUND COVER SHALL TAKE PLACE PRIOR TO APPROVAL OF KPDES PERMIT, LFUGC LAND DISTURBANCE PERMIT AND CITY OF GEORGETOWN GRADING PERMIT.
- ALL WORK SHALL BE COMPLETED IN ACCORDANCE WITH THE PROJECT AND KYTC SPECIFICATIONS.
- SEE POROUS ASPHALT PAVMENT DETAIL IN TYPICAL SECTIONS AND POROUS PAVEMENT SPECIFICATION FOR PAVEMENT AND CHOKER COURSE THICKNESSES.
- THERE ARE 818 PROPOSED PARKING SPACES. ALL PARKING SPACES ARE 9'x18'
- STANDARD CURB AND GUTTER SHALL BE MODIFIED TO A 1'-6" GUTTER INSTEAD OF A 2'-0".

POROUS PAVEMENT SPECIFICATIONS:

MATERIALS -
 THE POROUS ASPHALT PAVEMENT STRUCTURE SHALL MEET THE FOLLOWING REQUIREMENTS:

- EXISTING SOIL SUBGRADE UNDER THE POROUS ASPHALT PAVEMENT STRUCTURE SHALL NOT BE COMPACTED OR SUBJECT TO EXCESSIVE CONSTRUCTION EQUIPMENT TRAFFIC PRIOR TO GEOTEXTILE AND STONE BED PLACEMENT. THE BOTTOM SHALL REMAIN FLAT AND WHERE ELEVATION CHANGES EXIST, CONSIDER A TERRACED APPROACH RATHER THAN CONSTRUCTING STEEP SLOPES.
- A NON-WOVEN GEOTEXTILE FABRIC SHALL BE PLACED AS THE SEPARATION LAYER BETWEEN THE SOIL SUBGRADE AND THE STONE RESERVOIR LAYER.
- THE AGGREGATE RESERVOIR LAYER SHALL BE PLACED AT A THICKNESS AS DETERMINED BY THE DESIGNER AND UTILIZE SINGLE-SIZE STONE THAT HAS BEEN WASHED AND DOES NOT CONTAIN EXCESSIVE DUST OR FINE MATERIALS. AGGREGATES SHALL MEET THE GRADATION AND MATERIAL REQUIREMENTS SET FORTH IN SECTION 805 OF THE KYTC STANDARD SPECIFICATIONS AND SHALL CONSIST OF GRADATION-SIZE NO. 2. THE INTENT IS TO PROVIDE A SINGLE-SIZE CRUSHED LARGE STONE WITH ABOUT 40 PERCENT VOIDS.
- THE WORKING PLATFORM OVER THE RESERVOIR SHALL ALSO MEET THE REQUIREMENTS SET FORTH IN SECTION 805 OF THE KYTC STANDARD SPECIFICATIONS AND SHALL CONSIST OF EITHER GRADATION-SIZE NO. 8 OR NO. 9 STONE.
- DENSE GRADED AGGREGATE (OR ANY OTHER IMPERMEABLE MATERIALS) SHALL NOT BE PLACED WITHIN THE PAVEMENT STRUCTURE.
- THE HOT MIX ASPHALT SURFACE LAYER SHALL BE AT LEAST FIVE (5) INCHES THICK AND PLACED IN TWO SEPERATE LIFTS. THE ASPHALT MIXTURE SHALL UTILIZE A GRADATION CONSISTENT WITH AN OPEN-GRADED FRICTION COURSE (OGFC) AS DESCRIBED IN SECTION 404 OF THE KYTC STANDARD SPECIFICATIONS. THE NATIONAL ASPHALT PAVEMENT ASSOCIATION (NAPA) PUBLICATION INFORMATION SERIES ENTITLED: POROUS ASPHALT PAVEMENT FOR STORMWATER MANAGEMENT ALSO PROVIDES GUIDANCE ON THE GRADATION FOR THIS ASPHALT MIXTURE.
- PERVIOUS PAVEMENT #2 STONE MINIMUM DEPTH SHALL BE 12 INCHES. SEE SUBGRADE PLAN FOR AREAS REQUIRING GREATER DEPTH.

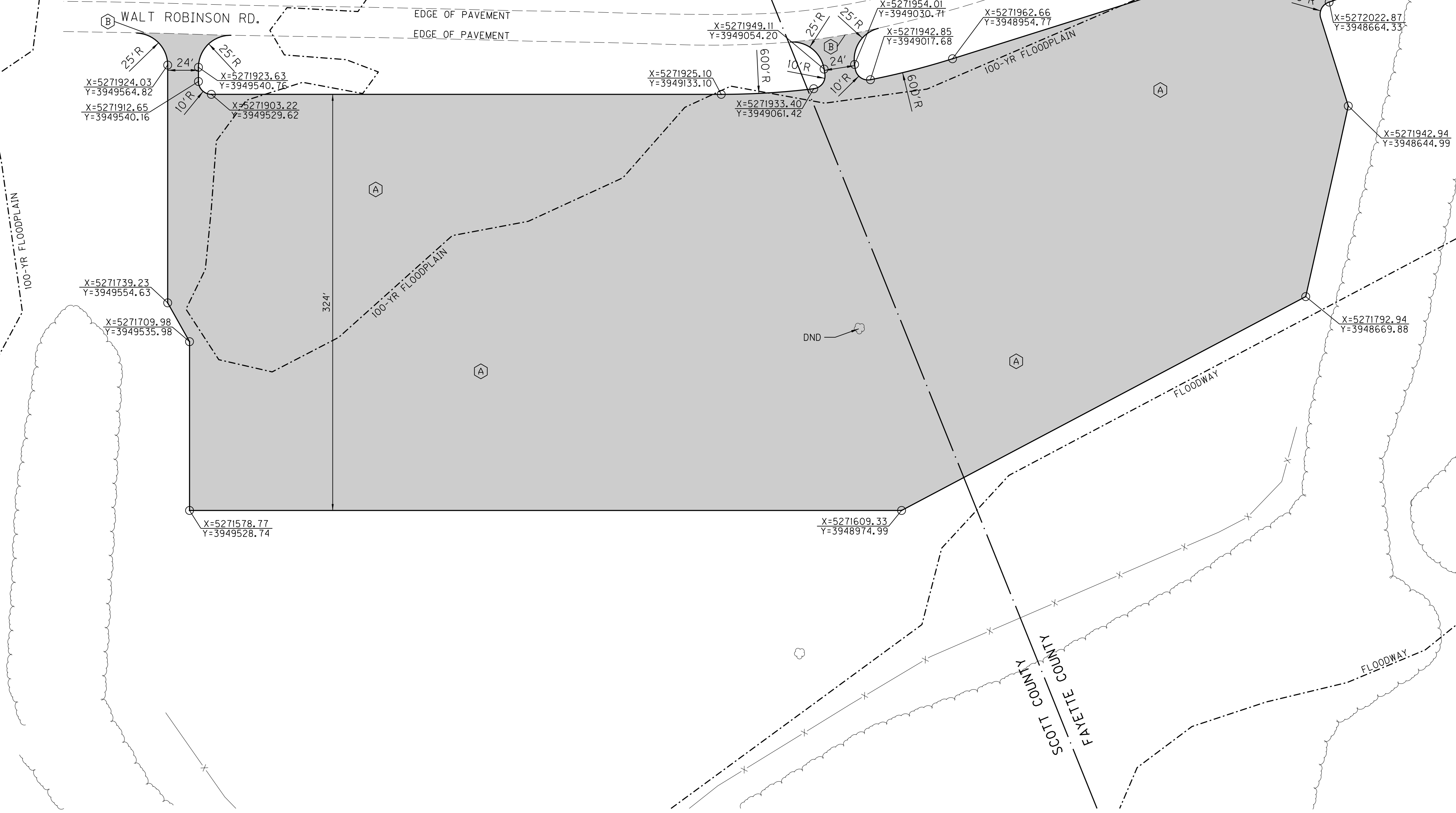
ASPHALT MIXTURE REQUIREMENTS -

- PAIKY RECOMMENDS UTILIZING PG 76-22 LIQUID ASPHALT BINDER IN THESE POROUS PAVMENT APPLICATIONS.
- PAIKY RECOMMENDS UTILIZING A 'D' TYPE AGGREGATE (THE TYPE 'A' REQUIREMENTS FOR NONPOLISHING AGGREGATES IN SECTIN 404 ARE NOT NECESSARY IN THIS APPLICATION DUE TO THE LOW SPEEDS EXPECTED IN PARKING LOTS).
- LABORATORY AIR VOIDS SHALL BE 16 PERCENT OR GREATER TO ASSURE PERMEABILITY IN THE MIX.
- THE ASPHALT CONTENT SHALL BE 6.0 PERCENT OR GREATER TO PROVIDE THE NECESSARY COATING OF THE AGGREGATES AND FOR LONG-TERM DURABILITY.

CONSTRUCTION CONSIDERATIONS-

POURIOUS ASPHALT MIXTURES REQUIRE SOME SPECIAL CONSTRUCTION CONSIDERATIONS WHICH ARE UNIQUE AND DIFFERENT FROM CONVENTIONAL ASPHALT PAVING PRACTICES:

- TEMPERATURE LIMITATIONS: THE KYTC STANDARD SPECIFICATIONS REQUIRE A MINIMUM AMBIENT AIR TEMPERATURE OF 60 DEGREES FOR PLACEMENT OF OGFC.
- SINCE DRAIN-DOWN OF THE LIQUID ASPHALT CAN OCCUR WITH THESE TYPES OF MIXTURES, CONSIDER LOWERING THE PLANT TEMPERATURES AS MUCH AS 50 DEGREES IN THE HOT SUMMER MONTHS TO AVOID THIS PROBLEM.
- UTILIZE CONVENTIONAL PAVING EQUIPMENT FOR PLACEMENT OF THE POROUS ASPHALT LAYER.
- IN ORDER TO SEAT THE AGGREGATE WITHIN THE MIXTURE, MAKE TWO OR THREE PASSES WITH A SMALL ROLLER IMMEDIATELY AFTER PLACEMENT. MORE FREQUENT ROLLING TENDS TO REDUCE THE INFILTRATION CAPABILITIES OF THE POROUS MIXTURE. AFTER FINAL ROLLING, TRAFFIC SHOULD BE RESTRICTED FOR THE FIRST 24 HOURS WHEN THE PAVEMENT TENDS TO BE TENDER. CARE MUST BE TAKEN SO THAT THE POROSITY OF THE PAVMENT IS NOT COMPRIMISED.



KEY NOTES:

- (A) PERVIOUS PAVEMENT
- (B) SEE SPECIAL NOTE

BEFORE YOU DIG

The contractor is instructed to call 1-800-752-6007 to reach KY 811, the one-call system for information on the location of existing underground utilities. The call is to be placed a minimum of two (2) and no more than ten (10) business days prior to excavation. The contractor should be aware that owners of underground facilities are not required to be members of the KY 811 one-call Before-U-Dig (BUD) service. The contractor must coordinate excavation with the utility owners, including those whom do not subscribe to KY 811. It may be necessary for the contractor to contact the County Court Clerk to determine what utility companies have facilities in the area.



**HORSE PARK IMPROVEMENTS
 AREA 2
 SITE PLAN**

FILE NAME: D:\PW_WORKDIR\TRICK\DMS300\TVR060600PL.DGN

USER: Trick
 DATE PLOTTED: October 20, 2015

E-SHEET NAME:

MicroStation v8.11.9.459

FILE NAME: D:\PW_WOR\DIR\TRICK\MS28600HORSE_PARK_AREA_3_SITE_PLAN.DGN

USER: Trick
DATE PLOTTED: October 20, 2015

E-SHEET NAME:

MicroStation v8.11.9.459

SPECIAL NOTE FOR PAVEMENT JOINTS NON-PERVIOUS PAVEMENT AND PERVIOUS PAVEMENT

IN AREAS SHOWN ON THE PLANS WHERE PERVIOUS PAVEMENT ABUTS TO NON-PERVIOUS PAVEMENT AND THE PAVEMENT CROSS-SLOPE IS SUCH THAT INTERNAL PAVEMENT DRAINAGE IS DRAINING AWAY FROM THE NON-PERVIOUS PAVEMENT, A PAVEMENT JOINT SHALL BE CONSTRUCTED FULL DEPTH AT THE INTERFACE BETWEEN THE TWO PAVEMENT MATERIALS. THE FACE OF THE NON-PERVIOUS PAVEMENT SHALL BE COATED WITH AN ASPHALT TACK COAT PRIOR TO PLACEMENT OF THE PERVIOUS PAVEMENT ADJACENT TO THE NON-PERVIOUS PAVEMENT. UNLESS OTHERWISE DIRECTED BY THE ENGINEER, THE TACK SHALL BE APPLIED AT A RATE TO ACHIEVE AN UNDILUTED RESIDUE OF 0.6 POUNDS (0.075 GALLONS) PER SQUARE YARD. TACK SHALL BE APPLIED BY FOGGING WITH A HAND SPRAY ATTACHMENT. TACK MATERIALS SHALL BE IN COMPLIANCE WITH SECTION 406 OF THE STANDARD SPECIFICATIONS FOR ROAD AND BRIDGE CONSTRUCTION, CURRENT EDITION.

ONCE PLACEMENT OF BOTH THE PERVIOUS AND NON-PERVIOUS PAVEMENT LAYERS HAS BEEN COMPLETED, SAW-CUT A NEAT LINE (1/4 INCH TO 3/8 INCH WIDE) TO A DEPTH NOT LESS THAN 3 INCHES AND FILL WITH HOT-POURED ELASTIC JOINT SEALER IN COMPLIANCE WITH SECTION 807 OF THE STANDARD SPECIFICATIONS FOR ROAD AND BRIDGE CONSTRUCTION, CURRENT EDITION.

PAYMENT FOR TACKING THE FACE OF THE NON-PERVIOUS PAVEMENT, SAW-CUTTING THE FINISHED JOINT, AND PLACEMENT OF THE HOT-POURED ELASTIC JOINT SEALER SHALL BE CONSIDERED INCIDENTAL TO PERVIOUS PAVEMENT.

SPECIAL NOTE FOR PAVEMENT JOINTS NON-PERVIOUS PAVEMENT AND PERVIOUS PAVEMENT

IN AREAS SHOWN ON THE PLANS WHERE PERVIOUS PAVEMENT ABUTS TO NON-PERVIOUS PAVEMENT AND THE PAVEMENT CROSS-SLOPE IS SUCH THAT INTERNAL PAVEMENT DRAINAGE IS DRAINING AWAY FROM THE NON-PERVIOUS PAVEMENT, A PAVEMENT JOINT SHALL BE CONSTRUCTED FULL DEPTH AT THE INTERFACE BETWEEN THE TWO PAVEMENT MATERIALS. THE FACE OF THE NON-PERVIOUS PAVEMENT SHALL BE COATED WITH AN ASPHALT TACK COAT PRIOR TO PLACEMENT OF THE PERVIOUS PAVEMENT ADJACENT TO THE NON-PERVIOUS PAVEMENT. UNLESS OTHERWISE DIRECTED BY THE ENGINEER, THE TACK SHALL BE APPLIED AT A RATE TO ACHIEVE AN UNDILUTED RESIDUE OF 0.6 POUNDS (0.075 GALLONS) PER SQUARE YARD. TACK SHALL BE APPLIED BY FOGGING WITH A HAND SPRAY ATTACHMENT. TACK MATERIALS SHALL BE IN COMPLIANCE WITH SECTION 406 OF THE STANDARD SPECIFICATIONS FOR ROAD AND BRIDGE CONSTRUCTION, CURRENT EDITION.

ONCE PLACEMENT OF BOTH THE PERVIOUS AND NON-PERVIOUS PAVEMENT LAYERS HAS BEEN COMPLETED, SAW-CUT A NEAT LINE (1/4 INCH TO 3/8 INCH WIDE) TO A DEPTH NOT LESS THAN 3 INCHES AND FILL WITH HOT-POURED ELASTIC JOINT SEALER IN COMPLIANCE WITH SECTION 807 OF THE STANDARD SPECIFICATIONS FOR ROAD AND BRIDGE CONSTRUCTION, CURRENT EDITION.

PAYMENT FOR TACKING THE FACE OF THE NON-PERVIOUS PAVEMENT, SAW-CUTTING THE FINISHED JOINT, AND PLACEMENT OF THE HOT-POURED ELASTIC JOINT SEALER SHALL BE AT THE CONTRACT UNIT PRICE PER LINEAL FOOT FOR PAVEMENT JOINT NON-PERVIOUS PAVEMENT AND PERVIOUS PAVEMENT.

KEY NOTES:

- (A) PERVIOUS PAVEMENT
- (B) IMPERVIOUS PAVEMENT
- (C) 2' CURB AND GUTTER
- (D) SEE SPECIAL NOTE
- (E) 3' VALLEY GUTTER
- (F) 2 BOARD PLANK FENCE
- (G) 227 LF - REDI ROCK RETAINING WALL
- (H) 195 LF - REDI ROCK RETAINING WALL
- (I) DO NOT DISTURB



ABREVIATIONS:

- ME MATCH EXISTING
- BC BOTTOM OF CURB
- CPP CORRUGATED PLASTIC PIPE
- TMH TELECOMMUNICATIONS MANHOLE
- EL JB JUNCTION BOX

COUNTY OF	ITEM NO.	SHEET NO.
FAYETTE	7-433.00	R9

PLAN REVISION DATE: 10-20-2015

SITE PLAN NOTES:

1. ALL CONSTRUCTION MUST CONFORM TO LFUGC AND COMMONWEALTH OF KENTUCKY STANDARDS.
2. ALL DIMENSIONS UNLESS OTHERWISE NOTED ARE TO THE EDGE OF PAVEMENT. ALL RADII ARE 5' UNLESS OTHERWISE NOTED.
3. NO GRADING, STRIPPING, EXCAVATION, FILLING, OR OTHER DISTURBANCE OF THE NATURAL GROUND COVER SHALL TAKE PLACE PRIOR TO APPROVAL OF KPDES PERMIT, LFUGC LAND DISTURBANCE PERMIT AND CITY OF GEORGETOWN GRADING PERMIT.
4. ALL WORK SHALL BE COMPLETED IN ACCORDANCE WITH THE PROJECT AND KYTC SPECIFICATIONS.
5. EXISTING TREES WITHIN THE LIMITS OF DISTURBANCE MUST BE RELOCATED OR REPLACED. COORDINATE REMOVAL OR REPLACEMENT WITH OWNER'S REPRESENTATIVE.
6. SEE PERVIOUS ASPHALT PAYMENT DETAIL IN TYPICAL SECTIONS AND POROUS PAVEMENT SPECIFICATION FOR PAVEMENT AND CHOKER COURSE THICKNESSES.
7. ALL ISLANDS ARE 32' LONG FROM FACE OF CURB TO FACE OF CURB WITH 1.5' GUTTER ON EITHER SIDE (35' TOTAL).
8. STANDARD CURB AND GUTTER SHALL BE MODIFIED TO A 1'-6" GUTTER INSTEAD OF A 2'-0".
9. ALL RADII SHALL BE 5' UNLESS OTHERWISE NOTED.
10. DISTANCE FROM FACE OF CURB AND FACE OF RETAINING WALL IS 11.5'.

POROUS PAVEMENT SPECIFICATIONS:

MATERIALS -

THE PERVIOUS ASPHALT PAVEMENT STRUCTURE SHALL MEET THE FOLLOWING REQUIREMENTS:

1. EXISTING SOIL SUBGRADE UNDER THE POROUS ASPHALT PAVEMENT STRUCTURE SHALL NOT BE COMPACTED OR SUBJECT TO EXCESSIVE CONSTRUCTION EQUIPMENT TRAFFIC PRIOR TO GEOTEXTILE AND STONE BED PLACEMENT. THE BOTTOM SHALL REMAIN FLAT AND WHERE ELEVATION CHANGES EXIST, CONSIDER A TERRACED APPROACH RATHER THAN CONSTRUCTING STEEP SLOPES.
2. A NON-WOVEN GEOTEXTILE FABRIC SHALL BE PLACED AS THE SEPARATION LAYER BETWEEN THE SOIL SUBGRADE AND THE STONE RESERVOIR LAYER.
3. THE AGGREGATE RESERVOIR LAYER SHALL BE PLACED AT A THICKNESS AS DETERMINED BY THE DESIGNER AND UTILIZE SINGLE-SIZE STONE THAT HAS BEEN WASHED AND DOES NOT CONTAIN EXCESSIVE DUST OR FINE MATERIALS. AGGREGATES SHALL MEET THE GRADATION AND MATERIAL REQUIREMENTS SET FORTH IN SECTION 805 OF THE KYTC STANDARD SPECIFICATIONS AND SHALL CONSIST OF GRADATION-SIZE NO. 2. THE INTENT IS TO PROVIDE A SINGLE-SIZE CRUSHED LARGE STONE WITH ABOUT 40 PERCENT VOIDS.
4. THE WORKING PLATFORM OVER THE RESERVOIR SHALL ALSO MEET THE REQUIREMENTS SET FORTH IN SECTION 805 OF THE KYTC STANDARD SPECIFICATIONS AND SHALL CONSIST OF EITHER GRADATION-SIZE NO. 8 OR NO. 9 STONE.
5. DENSE GRADED AGGREGATE (OR ANY OTHER IMPERMEABLE MATERIALS) SHALL NOT BE PLACED WITHIN THE PAVEMENT STRUCTURE.
6. THE HOT MIX ASPHALT SURFACE LAYER SHALL BE AT LEAST FIVE (5) INCHES THICK AND PLACED IN TWO SEPERATE LIFTS. THE ASPHALT MIXTURE SHALL UTILIZE A GRADATION CONSISTENT WITH AN OPEN-GRADED FRICTION COURSE (OGFC) AS DESCRIBED IN SECTION 404 OF THE KYTC STANDARD SPECIFICATIONS. THE NATIONAL ASPHALT PAVEMENT ASSOCIATION (NAPA) PUBLICATION INFORMATION SERIES (ENTITLED: POROUS ASPHALT PAVEMENT FOR STORMWATER MANAGEMENT) ALSO PROVIDES GUIDANCE ON THE GRADATION FOR THIS ASPHALT MIXTURE.
7. PERVIOUS PAVEMENT #2 STONE MINIMUM DEPTH SHALL BE 10 INCHES. SEE SUBGRADE PLAN FOR AREAS REQUIRING GREATER DEPTH.

ASPHALT MIXTURE REQUIREMENTS -

1. PAIKY RECOMMENDS UTILIZING PG 76-22 LIQUID ASPHALT BINDER IN THESE POROUS PAVEMENT APPLICATIONS.
2. PAIKY RECOMMENDS UTILIZING A "D" TYPE AGGREGATE (THE TYPE "A" REQUIREMENTS FOR NONPOLISHING AGGREGATES IN SECTION 404 ARE NOT NECESSARY IN THIS APPLICATION DUE TO THE LOW SPEEDS EXPECTED IN PARKING LOTS).
3. LABORATORY AIR VOIDS SHALL BE 16 PERCENT OR GREATER TO ASSURE PERMEABILITY IN THE MIX.
4. THE ASPHALT CONTENT SHALL BE 6.0 PERCENT OR GREATER TO PROVIDE THE NECESSARY COATING OF THE AGGREGATES AND FOR LONG-TERM DURABILITY.

CONSTRUCTION CONSIDERATIONS-

POURIOUS ASPHALT MIXTURES REQUIRE SOME SPECIAL CONSTRUCTION CONSIDERATIONS WHICH ARE UNIQUE AND DIFFERENT FROM CONVENTIONAL ASPHALT PAVING PRACTICES:

1. TEMPERATURE LIMITATIONS: THE KYTC STANDARD SPECIFICATIONS REQUIRE A MINIMUM AMBIENT AIR TEMPERATURE OF 60 DEGREES FOR PLACEMENT OF OGFC.
2. SINCE DRAIN-DOWN OF THE LIQUID ASPHALT CAN OCCUR WITH THESE TYPES OF MIXTURES, CONSIDER LOWERING THE PLANT TEMPERATURES AS MUCH AS 50 DEGREES IN THE HOT SUMMER MONTHS TO AVOID THIS PROBLEM.
3. UTILIZE CONVENTIONAL PAVING EQUIPMENT FOR PLACEMENT OF THE POROUS ASPHALT LAYER.
4. IN ORDER TO SEAT THE AGGREGATE WITHIN THE MIXTURE, MAKE TWO OR THREE PASSES WITH A SMALL ROLLER IMMEDIATELY AFTER PLACEMENT. MORE FREQUENT ROLLING TENDS TO REDUCE THE INFILTRATION CAPABILITIES OF THE POROUS MIXTURE. AFTER FINAL ROLLING, TRAFFIC SHOULD BE RESTRICTED FOR THE FIRST 24 HOURS WHEN THE PAVEMENT TENDS TO BE TENDER. CARE MUST BE TAKEN SO THAT THE POROSITY OF THE PAVEMENT IS NOT COMPROMISED.

BEFORE YOU DIG

The contractor is instructed to call 1-800-752-6007 to reach KY 811, the one-call system for information on the location of existing underground utilities. The call is to be placed a minimum of two (2) and no more than ten (10) business days prior to excavation. The contractor should be aware that owners of underground facilities are not required to be members of the KY 811 one-call Before-U-Dig (BUD) service. The contractor must coordinate excavation with the utility owners, including those whom do not subscribe to KY 811. It may be necessary for the contractor to contact the County Court Clerk to determine what utility companies have facilities in the area.



**HORSE PARK IMPROVEMENTS
AREA 3
SITE PLAN**

FILE NAME: D:\PW_WORKDIR\TRICK\MS28600HORSE_PARK_AREA_3_SITE_PLAN.DGN

USER: Trick
DATE PLOTTED: October 20, 2015

E-SHEET NAME:

MicroStation v8.11.9.459

SPECIAL NOTE FOR PAVEMENT JOINTS NON-PERVIOUS PAVEMENT AND PERVIOUS PAVEMENT

IN AREAS SHOWN ON THE PLANS WHERE PERVIOUS PAVEMENT ABUTS TO NON-PERVIOUS PAVEMENT AND THE PAVEMENT CROSS-SLOPE IS SUCH THAT INTERNAL PAVEMENT DRAINAGE IS DRAINING AWAY FROM THE NON-PERVIOUS PAVEMENT, A PAVEMENT JOINT SHALL BE CONSTRUCTED FULL DEPTH AT THE INTERFACE BETWEEN THE TWO PAVEMENT MATERIALS. THE FACE OF THE NON-PERVIOUS PAVEMENT SHALL BE COATED WITH AN ASPHALT TACK COAT PRIOR TO PLACEMENT OF THE PERVIOUS PAVEMENT ADJACENT TO THE NON-PERVIOUS PAVEMENT. UNLESS OTHERWISE DIRECTED BY THE ENGINEER, THE TACK SHALL BE APPLIED AT A RATE TO ACHIEVE AN UNDILUTED RESIDUE OF 0.6 POUNDS (0.075 GALLONS) PER SQUARE YARD. TACK SHALL BE APPLIED BY FOGGING WITH A HAND SPRAY ATTACHMENT. TACK MATERIALS SHALL BE IN COMPLIANCE WITH SECTION 406 OF THE STANDARD SPECIFICATIONS FOR ROAD AND BRIDGE CONSTRUCTION, CURRENT EDITION.

ONCE PLACEMENT OF BOTH THE PERVIOUS AND NON-PERVIOUS PAVEMENT LAYERS HAS BEEN COMPLETED, SAW-CUT A NEAT LINE (1/4 INCH TO 3/8 INCH WIDE) TO A DEPTH NOT LESS THAN 3 INCHES AND FILL WITH HOT-POURED ELASTIC JOINT SEALER IN COMPLIANCE WITH SECTION 807 OF THE STANDARD SPECIFICATIONS FOR ROAD AND BRIDGE CONSTRUCTION, CURRENT EDITION.

PAYMENT FOR TACKING THE FACE OF THE NON-PERVIOUS PAVEMENT, SAW-CUTTING THE FINISHED JOINT, AND PLACEMENT OF THE HOT-POURED ELASTIC JOINT SEALER SHALL BE CONSIDERED INCIDENTAL TO PERVIOUS PAVEMENT.

SPECIAL NOTE FOR PAVEMENT JOINTS NON-PERVIOUS PAVEMENT AND PERVIOUS PAVEMENT

IN AREAS SHOWN ON THE PLANS WHERE PERVIOUS PAVEMENT ABUTS TO NON-PERVIOUS PAVEMENT AND THE PAVEMENT CROSS-SLOPE IS SUCH THAT INTERNAL PAVEMENT DRAINAGE IS DRAINING AWAY FROM THE NON-PERVIOUS PAVEMENT, A PAVEMENT JOINT SHALL BE CONSTRUCTED FULL DEPTH AT THE INTERFACE BETWEEN THE TWO PAVEMENT MATERIALS. THE FACE OF THE NON-PERVIOUS PAVEMENT SHALL BE COATED WITH AN ASPHALT TACK COAT PRIOR TO PLACEMENT OF THE PERVIOUS PAVEMENT ADJACENT TO THE NON-PERVIOUS PAVEMENT. UNLESS OTHERWISE DIRECTED BY THE ENGINEER, THE TACK SHALL BE APPLIED AT A RATE TO ACHIEVE AN UNDILUTED RESIDUE OF 0.6 POUNDS (0.075 GALLONS) PER SQUARE YARD. TACK SHALL BE APPLIED BY FOGGING WITH A HAND SPRAY ATTACHMENT. TACK MATERIALS SHALL BE IN COMPLIANCE WITH SECTION 406 OF THE STANDARD SPECIFICATIONS FOR ROAD AND BRIDGE CONSTRUCTION, CURRENT EDITION.

ONCE PLACEMENT OF BOTH THE PERVIOUS AND NON-PERVIOUS PAVEMENT LAYERS HAS BEEN COMPLETED, SAW-CUT A NEAT LINE (1/4 INCH TO 3/8 INCH WIDE) TO A DEPTH NOT LESS THAN 3 INCHES AND FILL WITH HOT-POURED ELASTIC JOINT SEALER IN COMPLIANCE WITH SECTION 807 OF THE STANDARD SPECIFICATIONS FOR ROAD AND BRIDGE CONSTRUCTION, CURRENT EDITION.

PAYMENT FOR TACKING THE FACE OF THE NON-PERVIOUS PAVEMENT, SAW-CUTTING THE FINISHED JOINT, AND PLACEMENT OF THE HOT-POURED ELASTIC JOINT SEALER SHALL BE AT THE CONTRACT UNIT PRICE PER LINEAL FOOT FOR PAVEMENT JOINT NON-PERVIOUS PAVEMENT AND PERVIOUS PAVEMENT.

KEY NOTES:

- (A) PERVIOUS PAVEMENT
- (B) IMPERVIOUS PAVEMENT
- (C) 2' CURB AND GUTTER
- (D) SEE SPECIAL NOTE
- (E) 3' VALLEY GUTTER
- (F) 2 BOARD PLANK FENCE
- (G) 227 LF - REDI ROCK RETAINING WALL
- (H) 195 LF - REDI ROCK RETAINING WALL
- (I) DO NOT DISTURB

BEFORE YOU DIG

The contractor is instructed to call 1-800-752-6007 to reach KY 811, the one-call system for information on the location of existing underground utilities. The call is to be placed a minimum of two (2) and no more than ten (10) business days prior to excavation. The contractor should be aware that owners of underground facilities are not required to be members of the KY 811 one-call Before-U-Dig (BUD) service. The contractor must coordinate excavation with the utility owners, including those whom do not subscribe to KY 811. It may be necessary for the contractor to contact the County Court Clerk to determine what utility companies have facilities in the area.



COUNTY OF	ITEM NO.	SHEET NO.
FAYETTE	7-433.00	R9

ABREVIATIONS:

- ME MATCH EXISTING
- BC BOTTOM OF CURB
- CPP CORRUGATED PLASTIC PIPE
- TMH TELECOMMUNICATIONS MANHOLE
- EL JB JUNCTION BOX

PLAN REVISION DATE: 10-20-2015

SITE PLAN NOTES:

1. ALL CONSTRUCTION MUST CONFORM TO LFUGC AND COMMONWEALTH OF KENTUCKY STANDARDS.
2. ALL DIMENSIONS UNLESS OTHERWISE NOTED ARE TO THE EDGE OF PAVEMENT. ALL RADII ARE 5' UNLESS OTHERWISE NOTED.
3. NO GRADING, STRIPPING, EXCAVATION, FILLING, OR OTHER DISTURBANCE OF THE NATURAL GROUND COVER SHALL TAKE PLACE PRIOR TO APPROVAL OF KPDES PERMIT, LFUGC LAND DISTURBANCE PERMIT AND CITY OF GEORGETOWN GRADING PERMIT.
4. ALL WORK SHALL BE COMPLETED IN ACCORDANCE WITH THE PROJECT AND KYTC SPECIFICATIONS.
5. EXISTING TREES WITHIN THE LIMITS OF DISTURBANCE MUST BE RELOCATED OR REPLACED. COORDINATE REMOVAL OR REPLACEMENT WITH OWNER'S REPRESENTATIVE.
6. SEE PERVIOUS ASPHALT PAYMENT DETAIL IN TYPICAL SECTIONS AND POROUS PAVEMENT SPECIFICATION FOR PAVEMENT AND CHOKER COURSE THICKNESSES.
7. ALL ISLANDS ARE 32' LONG FROM FACE OF CURB TO FACE OF CURB WITH 1.5' GUTTER ON EITHER SIDE (35' TOTAL).
8. STANDARD CURB AND GUTTER SHALL BE MODIFIED TO A 1'-6" GUTTER INSTEAD OF A 2'-0".
9. ALL RADII SHALL BE 5' UNLESS OTHERWISE NOTED.
10. DISTANCE FROM FACE OF CURB AND FACE OF RETAINING WALL IS 11.5'.

POROUS PAVEMENT SPECIFICATIONS:

MATERIALS -

THE PERVIOUS ASPHALT PAVEMENT STRUCTURE SHALL MEET THE FOLLOWING REQUIREMENTS:

1. EXISTING SOIL SUBGRADE UNDER THE POROUS ASPHALT PAVEMENT STRUCTURE SHALL NOT BE COMPACTED OR SUBJECT TO EXCESSIVE CONSTRUCTION EQUIPMENT TRAFFIC PRIOR TO GEOTEXTILE AND STONE BED PLACEMENT. THE BOTTOM SHALL REMAIN FLAT AND WHERE ELEVATION CHANGES EXIST, CONSIDER A TERRACED APPROACH RATHER THAN CONSTRUCTING STEEP SLOPES.
2. A NON-WOVEN GEOTEXTILE FABRIC SHALL BE PLACED AS THE SEPARATION LAYER BETWEEN THE SOIL SUBGRADE AND THE STONE RESERVOIR LAYER.
3. THE AGGREGATE RESERVOIR LAYER SHALL BE PLACED AT A THICKNESS AS DETERMINED BY THE DESIGNER AND UTILIZE SINGLE-SIZE STONE THAT HAS BEEN WASHED AND DOES NOT CONTAIN EXCESSIVE DUST OR FINE MATERIALS. AGGREGATES SHALL MEET THE GRADATION AND MATERIAL REQUIREMENTS SET FORTH IN SECTION 805 OF THE KYTC STANDARD SPECIFICATIONS AND SHALL CONSIST OF GRADATION-SIZE NO. 2. THE INTENT IS TO PROVIDE A SINGLE-SIZE CRUSHED LARGE STONE WITH ABOUT 40 PERCENT VOIDS.
4. THE WORKING PLATFORM OVER THE RESERVOIR SHALL ALSO MEET THE REQUIREMENTS SET FORTH IN SECTION 805 OF THE KYTC STANDARD SPECIFICATIONS AND SHALL CONSIST OF EITHER GRADATION-SIZE NO. 8 OR NO. 9 STONE.
5. DENSE GRADED AGGREGATE (OR ANY OTHER IMPERMEABLE MATERIALS) SHALL NOT BE PLACED WITHIN THE PAVEMENT STRUCTURE.
6. THE HOT MIX ASPHALT SURFACE LAYER SHALL BE AT LEAST FIVE (5) INCHES THICK AND PLACED IN TWO SEPARATE LIFTS. THE ASPHALT MIXTURE SHALL UTILIZE A GRADATION CONSISTENT WITH AN OPEN-GRADED FRICTION COURSE (OGFC) AS DESCRIBED IN SECTION 404 OF THE KYTC STANDARD SPECIFICATIONS. THE NATIONAL ASPHALT PAVEMENT ASSOCIATION (NAPA) PUBLICATION INFORMATION SERIES (ENTITLED: POROUS ASPHALT PAVEMENT FOR STORMWATER MANAGEMENT) ALSO PROVIDES GUIDANCE ON THE GRADATION FOR THIS ASPHALT MIXTURE.
7. PERVIOUS PAVEMENT #2 STONE MINIMUM DEPTH SHALL BE 10 INCHES. SEE SUBGRADE PLAN FOR AREAS REQUIRING GREATER DEPTH.

ASPHALT MIXTURE REQUIREMENTS -

1. PAIKY RECOMMENDS UTILIZING PG 76-22 LIQUID ASPHALT BINDER IN THESE POROUS PAVEMENT APPLICATIONS.
2. PAIKY RECOMMENDS UTILIZING A "D" TYPE AGGREGATE (THE TYPE "A" REQUIREMENTS FOR NONPOLISHING AGGREGATES IN SECTION 404 ARE NOT NECESSARY IN THIS APPLICATION DUE TO THE LOW SPEEDS EXPECTED IN PARKING LOTS).
3. LABORATORY AIR VOIDS SHALL BE 16 PERCENT OR GREATER TO ASSURE PERMEABILITY IN THE MIX.
4. THE ASPHALT CONTENT SHALL BE 6.0 PERCENT OR GREATER TO PROVIDE THE NECESSARY COATING OF THE AGGREGATES AND FOR LONG-TERM DURABILITY.

CONSTRUCTION CONSIDERATIONS-

- POURIOUS ASPHALT MIXTURES REQUIRE SOME SPECIAL CONSTRUCTION CONSIDERATIONS WHICH ARE UNIQUE AND DIFFERENT FROM CONVENTIONAL ASPHALT PAVING PRACTICES:
1. TEMPERATURE LIMITATIONS: THE KYTC STANDARD SPECIFICATIONS REQUIRE A MINIMUM AMBIENT AIR TEMPERATURE OF 60 DEGREES FOR PLACEMENT OF OGFC.
 2. SINCE DRAIN-DOWN OF THE LIQUID ASPHALT CAN OCCUR WITH THESE TYPES OF MIXTURES, CONSIDER LOWERING THE PLANT TEMPERATURES AS MUCH AS 50 DEGREES IN THE HOT SUMMER MONTHS TO AVOID THIS PROBLEM.
 3. UTILIZE CONVENTIONAL PAVING EQUIPMENT FOR PLACEMENT OF THE POROUS ASPHALT LAYER.
 4. IN ORDER TO SEAT THE AGGREGATE WITHIN THE MIXTURE, MAKE TWO OR THREE PASSES WITH A SMALL ROLLER IMMEDIATELY AFTER PLACEMENT. MORE FREQUENT ROLLING TENDS TO REDUCE THE INFILTRATION CAPABILITIES OF THE POROUS MIXTURE. AFTER FINAL ROLLING, TRAFFIC SHOULD BE RESTRICTED FOR THE FIRST 24 HOURS WHEN THE PAVEMENT TENDS TO BE TENDER. CARE MUST BE TAKEN SO THAT THE POROSITY OF THE PAVEMENT IS NOT COMPROMISED.

HORSE PARK IMPROVEMENTS
AREA 3
SITE PLAN

MATERIAL SUMMARY

CONTRACT ID: 151067

034GR15D067

DE03485341567

KENTUCKY HORSE PARK VARIOUS TRANSPORTATION IMPROVEMENTS WITHIN THE KENTUCKY HORSE PARK. GRADE & DRAIN WITH ASPHALT SURFACE.

Project Line No	Bid Code	DESCRIPTION	Quantity	Unit
0005	00001	DGA BASE	2,085.00	TON
0010	00221	CL2 ASPH BASE 0.75D PG64-22	91.00	TON
0015	00223	CL3 ASPH BASE 0.75D PG64-22	1,228.00	TON
0020	00301	CL2 ASPH SURF 0.38D PG64-22	33.00	TON
0025	00388	CL3 ASPH SURF 0.38B PG64-22 - (REVISED: 10-13-15)	1,910.00	TON
0030	24446EC	ASPHALT PAVING - PERVIOUS PAVEMENTS	21,444.00	TON
0035	00071	CRUSHED AGGREGATE SIZE NO 57	2,174.00	TON
0040	00078	CRUSHED AGGREGATE SIZE NO 2	63,992.00	TON
0045	00083	CRUSHED AGGREGATE SIZE NO 8	9,663.00	TON
0050	01001	PERFORATED PIPE-6 IN	1,218.00	LF
0055	01012	NON-PERFORATED PIPE-8 IN	938.00	LF
0060	01013	NON-PERFORATED PIPE-10 IN	62.00	LF
0065	01022	PERF PIPE HEADWALL TY 1-8 IN	41.00	EACH
0070	01310	REMOVE PIPE	311.00	LF
0075	01456	CURB BOX INLET TYPE A	3.00	EACH
0080	01496	DROP BOX INLET TYPE 3	1.00	EACH
0085	01541	DROP BOX INLET TYPE 10	3.00	EACH
0090	01650	JUNCTION BOX - (REVISED: 10-20-15)	2.00	EACH
0095	01811	STANDARD CURB AND GUTTER MOD	9,000.00	LF
0100	01876	STANDARD HEADER CURB MOD	55.00	LF
0105	01891	ISLAND HEADER CURB TYPE 2	410.00	LF
0110	01895	VALLEY GUTTER	70.00	LF
0115	01982	DELINEATOR FOR GUARDRAIL MONO DIRECTIONAL WHITE	3.00	EACH
0120	02003	RELOCATE TEMP CONC BARRIER	1,130.00	LF
0125	02006	REMOVE CONCRETE MEDIAN	106.00	LF
0130	02091	REMOVE PAVEMENT	264.00	SQYD
0135	02159	TEMP DITCH	4,750.00	LF
0140	02160	CLEAN TEMP DITCH	2,375.00	LF
0145	02200	ROADWAY EXCAVATION	45,498.00	CUYD
0150	02237	DITCHING	1,500.00	LF
0155	02242	WATER	3.70	MGAL
0160	02265	REMOVE FENCE	363.00	LF
0165	02351	GUARDRAIL-STEEL W BEAM-S FACE	228.00	LF
0170	02359	GUARDRAIL CONNECTOR TO CONC MED BARR	2.00	EACH
0175	02367	GUARDRAIL END TREATMENT TYPE 1	1.00	EACH
0180	02369	GUARDRAIL END TREATMENT TYPE 2A	1.00	EACH
0185	02381	REMOVE GUARDRAIL	410.00	LF
0190	02483	CHANNEL LINING CLASS II	72.00	TON
0195	02545	CLEARING AND GRUBBING - 29.8 ACRES	1.00	LS
0200	02585	EDGE KEY	1,697.00	LF
0205	02599	FABRIC-GEOTEXTILE TYPE IV	89,306.00	SQYD
0210	02650	MAINTAIN & CONTROL TRAFFIC	1.00	LS

MATERIAL SUMMARY

Project Line No	Bid Code	DESCRIPTION	Quantity	Unit
0215	02701	TEMP SILT FENCE	4,750.00	LF
0220	02703	SILT TRAP TYPE A	26.00	EACH
0225	02704	SILT TRAP TYPE B	26.00	EACH
0230	02705	SILT TRAP TYPE C	26.00	EACH
0235	02706	CLEAN SILT TRAP TYPE A	26.00	EACH
0240	02707	CLEAN SILT TRAP TYPE B	26.00	EACH
0245	02708	CLEAN SILT TRAP TYPE C	26.00	EACH
0250	02720	SIDEWALK-4 IN CONCRETE	80.00	SQYD
0255	02726	STAKING	1.00	LS
0260	02898	RELOCATE CRASH CUSHION	2.00	EACH
0265	02900	INSTALL TEMP CRASH CUSHION	2.00	EACH
0270	03171	CONCRETE BARRIER WALL TYPE 9T	1,130.00	LF
0275	03289	SIDEWALK RAMP TYPE 3	2.00	EACH
0280	03425	ADJUST WATER VALVE	1.00	EACH
0285	03436	REMOVE-REINSTALL FIRE HYDRANT	1.00	EACH
0290	05950	EROSION CONTROL BLANKET	15,000.00	SQYD
0295	05952	TEMP MULCH	88,668.00	SQYD
0300	05953	TEMP SEEDING AND PROTECTION	67,172.00	SQYD
0305	05963	INITIAL FERTILIZER	1.60	TON
0310	05964	20-10-10 FERTILIZER	7.00	TON
0315	05985	SEEDING AND PROTECTION	134,343.00	SQYD
0320	05990	SODDING	750.00	SQYD
0325	06407	SBM ALUM SHEET SIGNS .125 IN	6.25	SQFT
0330	06410	STEEL POST TYPE 1	12.00	LF
0335	06510	PAVE STRIPING-TEMP PAINT-4 IN	500.00	LF
0340	06514	PAVE STRIPING-PERM PAINT-4 IN	27,266.00	LF
0345	06566	PAVE MARKING-THERMO X-WALK-12 IN	206.00	LF
0350	06567	PAVE MARKING-THERMO STOP BAR-12IN	28.00	LF
0355	06574	PAVE MARKING-THERMO CURV ARROW	11.00	EACH
0360	08018	RETAINING WALL	3,806.00	SQFT
0365	08100	CONCRETE-CLASS A	65.00	CUYD
0370	10020NS	FUEL ADJUSTMENT	11,192.00	DOLL
0375	10030NS	ASPHALT ADJUSTMENT	6,463.00	DOLL
0380	15092	S MANHOLE	2.00	EACH
0385	20418ED	REMOVE & RELOCATE SIGNS	3.00	EACH
0390	20985ND	CLEANOUT - PIPE	2.00	EACH
0395	21289ED	LONGITUDINAL EDGE KEY	1,985.00	LF
0400	22000ED	WOOD PLANK FENCE - 2 BOARD FENCE	1,386.00	LF
0405	23086EN	CONCRETE MEDIAN BARRIER TY 9C	300.00	LF
0410	23158ES505	DETECTABLE WARNINGS	32.00	SQFT
0415	23836EC	RELOCATE LIGHT POLE	2.00	EACH
0420	23837EC	RELOCATE UNDERGROUND ELECTRIC	310.00	LF
0425	30050	SPEED HUMP - 11 LOCATIONS	1.00	LS
0430	30062	REMOVE STEEL PIPE BOLLARD - REMOVE BOLLARDS	4.00	EACH
0435	00460	CULVERT PIPE-12 IN	369.00	LF
0440	00461	CULVERT PIPE-15 IN	95.00	LF
0445	00462	CULVERT PIPE-18 IN	915.00	LF
0450	00464	CULVERT PIPE-24 IN	673.00	LF
0455	00466	CULVERT PIPE-30 IN	685.00	LF
0460	01200	PIPE CULVERT HEADWALL-12 IN	1.00	EACH

MATERIAL SUMMARY

Project Line No	Bid Code	DESCRIPTION	Quantity	Unit
0465	01202	PIPE CULVERT HEADWALL-15 IN	2.00	EACH
0470	01204	PIPE CULVERT HEADWALL-18 IN	7.00	EACH
0475	01208	PIPE CULVERT HEADWALL-24 IN	2.00	EACH
0480	01210	PIPE CULVERT HEADWALL-30 IN	4.00	EACH
0485	01456	CURB BOX INLET TYPE A	3.00	EACH
0490	01480	CURB BOX INLET TYPE B	3.00	EACH
0495	01496	DROP BOX INLET TYPE 3	2.00	EACH
0500	01541	DROP BOX INLET TYPE 10	3.00	EACH
0505	01621	CONC MED BARR BOX INLET TY 9B1	1.00	EACH
0510	01643	JUNCTION BOX-24 IN	1.00	EACH
0515	01756	MANHOLE TYPE A - (REVISED: 10-20-15)	2.00	EACH
0520	02403	REMOVE CONCRETE MASONRY	86.00	CUYD
0525	08001	STRUCTURE EXCAVATION-COMMON	204.00	CUYD
0530	08100	CONCRETE-CLASS A	176.00	CUYD
0535	08150	STEEL REINFORCEMENT	33,475.00	LB
0540	02568	MOBILIZATION	1.00	LS
0545	02569	DEMOBILIZATION	1.00	LS

CONTRACT ID: 151067

034GR15D067

DE03485341568

LEGACY TRAIL EXTENSION OF LEGACY TRAIL ALONG THE SOUTHERN AND WESTERN BOUNDARIES OF THE KY HORSE PARK FROM ITS CURRENT NORTHERN TERMINUS AT CAMPGROUND ROAD IN THE KY HORSE PARK. GRADE & DRAIN WITH ASPHALT SURFACE.

Project Line No	Bid Code	DESCRIPTION	Quantity	Unit
0005	00001	DGA BASE	12,335.00	TON
0010	00223	CL3 ASPH BASE 0.75D PG64-22	4,690.00	TON
0015	00388	CL3 ASPH SURF 0.38B PG64-22 - (REVISED: 10-13-15)	1,760.00	TON
0020	00078	CRUSHED AGGREGATE SIZE NO 2	600.00	TON
0025	01000	PERFORATED PIPE-4 IN	100.00	LF
0030	01010	NON-PERFORATED PIPE-4 IN	60.00	LF
0035	01028	PERF PIPE HEADWALL TY 3-4 IN	6.00	EACH
0040	01052	SEWER PIPE-8 IN	1,268.00	LF
0045	01799	SANITARY SEWER MANHOLE	4.00	EACH
0050	01876	STANDARD HEADER CURB MOD	564.00	LF
0055	02159	TEMP DITCH	6,525.00	LF
0060	02160	CLEAN TEMP DITCH	3,264.00	LF
0065	02200	ROADWAY EXCAVATION	20,015.00	CUYD
0070	02242	WATER	5.00	MGAL
0075	02265	REMOVE FENCE	9,434.00	LF
0080	02483	CHANNEL LINING CLASS II	300.00	TON
0085	02545	CLEARING AND GRUBBING - 22.3 ACRES	1.00	LS
0090	02585	EDGE KEY	183.00	LF
0095	02599	FABRIC-GEOTEXTILE TYPE IV	2,000.00	SQYD
0100	23143EN	DECORATIVE HANDRAIL - (REVISED: 10-20-15)	450.00	LF
0105	02650	MAINTAIN & CONTROL TRAFFIC	1.00	LS
0110	02701	TEMP SILT FENCE	6,525.00	LF
0115	02703	SILT TRAP TYPE A	20.00	EACH

MATERIAL SUMMARY

Project Line No	Bid Code	DESCRIPTION	Quantity	Unit
0120	02704	SILT TRAP TYPE B	20.00	EACH
0125	02705	SILT TRAP TYPE C	20.00	EACH
0130	02706	CLEAN SILT TRAP TYPE A	20.00	EACH
0135	02707	CLEAN SILT TRAP TYPE B	20.00	EACH
0140	02708	CLEAN SILT TRAP TYPE C	20.00	EACH
0145	02720	SIDEWALK-4 IN CONCRETE	658.00	SQYD
0150	02720	SIDEWALK-4 IN CONCRETE - WALK 2 IN WIDE BAND AT FLAGPOLES	20.00	SQYD
0155	02720	SIDEWALK-4 IN CONCRETE - WALK BIKE RACK PAD	5.00	SQYD
0160	02726	STAKING	1.00	LS
0165	03287	SIDEWALK RAMP TYPE 1	5.00	EACH
0170	03289	SIDEWALK RAMP TYPE 3	11.00	EACH
0175	03420	WATER LINE INSTALLATION	1,310.00	LF
0180	03496	VALVE-6 IN	1.00	EACH
0185	03551	TAPPING SLEEVE & VALVE	1.00	EACH
0190	04903	REFERENCE MARKER - TRAILHEAD MILE MARKER	2.00	EACH
0195	05950	EROSION CONTROL BLANKET	10,500.00	SQYD
0200	05952	TEMP MULCH	70,968.00	SQYD
0205	05953	TEMP SEEDING AND PROTECTION	53,764.00	SQYD
0210	05963	INITIAL FERTILIZER	1.20	TON
0215	05964	20-10-10 FERTILIZER	5.50	TON
0220	05985	SEEDING AND PROTECTION	105,527.00	SQYD
0225	05989	SPECIAL SEEDING CROWN VETCH	2,000.00	SQYD
0230	05990	SODDING	7,115.00	SQYD
0235	06407	SBM ALUM SHEET SIGNS .125 IN	255.75	SQFT
0240	06410	STEEL POST TYPE 1	936.00	LF
0245	06514	PAVE STRIPING-PERM PAINT-4 IN	24,276.00	LF
0250	06566	PAVE MARKING-THERMO X-WALK-12 IN	1,008.00	LF
0255	06567	PAVE MARKING-THERMO STOP BAR-12IN	124.00	LF
0260	06570	PAVE MARKING-PAINT CROSS-HATCH	40.00	SQFT
0265	10020NS	FUEL ADJUSTMENT	17,939.00	DOLL
0270	10030NS	ASPHALT ADJUSTMENT	25,217.00	DOLL
0275	20081NN	CONNECT TO WATER MAIN	1.00	EACH
0280	20156EC	FIRE HYDRANT ASSEMBLY	1.00	EACH
0285	20206EC	PAVE MARK HANDICAP SYMBOL	2.00	EACH
0290	20782NS714	PAVE MARKING THERMO-BIKE	6.00	EACH
0295	21341ND	BOLLARDS	12.00	EACH
0300	22000ED	WOOD PLANK FENCE - 4 BOARD FENCE	16,236.00	LF
0305	22139NN	CONNECT TO SEWER MAIN - IN	1.00	EACH
0310	22995EN	SANITARY SEWER SERVICE CONNECTION- 4 IN	265.00	LF
0315	23158ES505	DETECTABLE WARNINGS	488.00	SQFT
0320	23274EN11F	TURF REINFORCEMENT MAT 1	15,500.00	SQYD
0325	23758EC	ELECTRICAL SERVICE CONNECTION	2.00	EACH
0330	23802EC	PRECAST VEHICLE STOP	20.00	EACH
0335	30017	STONE PYLON - 12 FT TALL	1.00	EACH
0340	30020	BIKE RACK - FORMS AND SURFACES	1.00	EACH
0345	30064	MANUFACTURED RESTROOM BUILDING	2.00	EACH
0350	30083	FLAGPOLE - 30 FT	6.00	EACH
0355	30084	BANNER	6.00	EACH
0360	30085	DRY LAID ROCK SEATWALL	71.00	LF

MATERIAL SUMMARY

Project Line No	Bid Code	DESCRIPTION	Quantity	Unit
0365	40000	SITE PREPARATION - LANDSCAPING AND TRAILHEAD AMMENITIES	1.00	LS
0370	00441	ENTRANCE PIPE-18 IN	41.00	LF
0375	00461	CULVERT PIPE-15 IN	113.00	LF
0380	00464	CULVERT PIPE-24 IN	80.00	LF
0385	00466	CULVERT PIPE-30 IN	375.00	LF
0390	00469	CULVERT PIPE-42 IN	65.00	LF
0395	01202	PIPE CULVERT HEADWALL-15 IN	8.00	EACH
0400	01208	PIPE CULVERT HEADWALL-24 IN	4.00	EACH
0405	01210	PIPE CULVERT HEADWALL-30 IN	10.00	EACH
0410	01214	PIPE CULVERT HEADWALL-42 IN	2.00	EACH
0415	01529	DROP BOX INLET TYPE 6D	1.00	EACH
0420	22767ES710	DROP BOX INLET TY 6E	1.00	EACH
0425	20014ES724	EASTERN REDBUD	7.00	EACH
0430	20065ES724	SHUMARD OAK	4.00	EACH
0435	20512NS724	RED MAPLE	4.00	EACH
0440	20516NS724	TULIP POPLAR	5.00	EACH
0445	20566NS724	FLOWERING DOGWOOD	6.00	EACH
0450	22694NS724	SHADEMASTER HONEYLOCUST	5.00	EACH
0455	23646EC	CONTAINER PLANTS - KNOCKOUT ROSES-3 GAL	26.00	EACH
0460	24558ED	ORNAMENTAL GRASS - 3 GAL	57.00	EACH
0465	02568	MOBILIZATION	1.00	LS
0470	02569	DEMOBILIZATION	1.00	LS

PROPOSAL BID ITEMS

REVISED ADDENDUM #2: 10-20-15

151067

Page 1 of 5

Report Date 10/20/15

Section: 0001 - PAVING

LINE	BID CODE	ALT	DESCRIPTION	QUANTITY	UNIT	UNIT PRIC	FP	AMOUNT
0010	00001		DGA BASE	14,420.00	TON		\$	
0020	00221		CL2 ASPH BASE 0.75D PG64-22	91.00	TON		\$	
0030	00223		CL3 ASPH BASE 0.75D PG64-22	5,918.00	TON		\$	
0040	00301		CL2 ASPH SURF 0.38D PG64-22	33.00	TON		\$	
0050	00388		CL3 ASPH SURF 0.38B PG64-22 (REVISED: 10-13-15)	3,670.00	TON		\$	
0060	24446EC		ASPHALT PAVING PERVIOUS PAVEMENTS	21,444.00	TON		\$	

Section: 0002 - ROADWAY

LINE	BID CODE	ALT	DESCRIPTION	QUANTITY	UNIT	UNIT PRIC	FP	AMOUNT
0070	00071		CRUSHED AGGREGATE SIZE NO 57	2,174.00	TON		\$	
0080	00078		CRUSHED AGGREGATE SIZE NO 2	64,592.00	TON		\$	
0090	00083		CRUSHED AGGREGATE SIZE NO 8	9,663.00	TON		\$	
0100	01000		PERFORATED PIPE-4 IN	100.00	LF		\$	
0110	01001		PERFORATED PIPE-6 IN	1,218.00	LF		\$	
0120	01010		NON-PERFORATED PIPE-4 IN	60.00	LF		\$	
0130	01012		NON-PERFORATED PIPE-8 IN	938.00	LF		\$	
0140	01013		NON-PERFORATED PIPE-10 IN	62.00	LF		\$	
0150	01022		PERF PIPE HEADWALL TY 1-8 IN	41.00	EACH		\$	
0160	01028		PERF PIPE HEADWALL TY 3-4 IN	6.00	EACH		\$	
0170	01052		SEWER PIPE-8 IN	1,268.00	LF		\$	
0180	01310		REMOVE PIPE	311.00	LF		\$	
0190	01456		CURB BOX INLET TYPE A	3.00	EACH		\$	
0200	01496		DROP BOX INLET TYPE 3	1.00	EACH		\$	
0210	01541		DROP BOX INLET TYPE 10	3.00	EACH		\$	
0220	01650		JUNCTION BOX (REVISED: 10-20-15)	2.00	EACH		\$	
0230	01799		SANITARY SEWER MANHOLE	4.00	EACH		\$	
0240	01811		STANDARD CURB AND GUTTER MOD	9,000.00	LF		\$	
0250	01876		STANDARD HEADER CURB MOD	619.00	LF		\$	
0260	01891		ISLAND HEADER CURB TYPE 2	410.00	LF		\$	
0270	01895		VALLEY GUTTER	70.00	LF		\$	
0280	01982		DELINEATOR FOR GUARDRAIL MONO DIRECTIONAL WHITE	3.00	EACH		\$	
0290	02003		RELOCATE TEMP CONC BARRIER	1,130.00	LF		\$	
0300	02006		REMOVE CONCRETE MEDIAN	106.00	LF		\$	
0310	02091		REMOVE PAVEMENT	264.00	SQYD		\$	
0320	02159		TEMP DITCH	11,275.00	LF		\$	
0330	02160		CLEAN TEMP DITCH	5,639.00	LF		\$	
0340	02200		ROADWAY EXCAVATION	65,513.00	CUYD		\$	
0350	02237		DITCHING	1,500.00	LF		\$	
0360	02242		WATER	8.70	MGAL		\$	
0370	02265		REMOVE FENCE	9,797.00	LF		\$	
0380	02351		GUARDRAIL-STEEL W BEAM-S FACE	228.00	LF		\$	
0390	02359		GUARDRAIL CONNECTOR TO CONC MED BARR	2.00	EACH		\$	

PROPOSAL BID ITEMS

REVISED ADDENDUM #2: 10-20-15

151067

Page 2 of 5

Report Date 10/20/15

LINE	BID CODE	ALT	DESCRIPTION	QUANTITY	UNIT	UNIT PRIC	FP	AMOUNT
0400	02367		GUARDRAIL END TREATMENT TYPE 1	1.00	EACH		\$	
0410	02369		GUARDRAIL END TREATMENT TYPE 2A	1.00	EACH		\$	
0420	02381		REMOVE GUARDRAIL	410.00	LF		\$	
0430	02483		CHANNEL LINING CLASS II	372.00	TON		\$	
0440	02545		CLEARING AND GRUBBING 22.3 ACRES	1.00	LS		\$	
0450	02545		CLEARING AND GRUBBING 29.8 ACRES	1.00	LS		\$	
0460	02585		EDGE KEY	1,880.00	LF		\$	
0470	02599		FABRIC-GEOTEXTILE TYPE IV	91,306.00	SQYD		\$	
0480	23143EN		DECORATIVE HANDRAIL (REVISED: 10-20-15)	450.00	LF		\$	
0490	02650		MAINTAIN & CONTROL TRAFFIC	1.00	LS		\$	
0500	02701		TEMP SILT FENCE	11,275.00	LF		\$	
0510	02703		SILT TRAP TYPE A	46.00	EACH		\$	
0520	02704		SILT TRAP TYPE B	46.00	EACH		\$	
0530	02705		SILT TRAP TYPE C	46.00	EACH		\$	
0540	02706		CLEAN SILT TRAP TYPE A	46.00	EACH		\$	
0550	02707		CLEAN SILT TRAP TYPE B	46.00	EACH		\$	
0560	02708		CLEAN SILT TRAP TYPE C	46.00	EACH		\$	
0570	02720		SIDEWALK-4 IN CONCRETE	738.00	SQYD		\$	
0580	02720		SIDEWALK-4 IN CONCRETE WALK 2 IN WIDE BAND AT FLAGPOLES	20.00	SQYD		\$	
0590	02720		SIDEWALK-4 IN CONCRETE WALK BIKE RACK PAD	5.00	SQYD		\$	
0600	02726		STAKING	1.00	LS		\$	
0610	02898		RELOCATE CRASH CUSHION	2.00	EACH		\$	
0620	02900		INSTALL TEMP CRASH CUSHION	2.00	EACH		\$	
0630	03171		CONCRETE BARRIER WALL TYPE 9T	1,130.00	LF		\$	
0640	03287		SIDEWALK RAMP TYPE 1	5.00	EACH		\$	
0650	03289		SIDEWALK RAMP TYPE 3	13.00	EACH		\$	
0660	03420		WATER LINE INSTALLATION	1,310.00	LF		\$	
0670	03425		ADJUST WATER VALVE	1.00	EACH		\$	
0680	03436		REMOVE-REINSTALL FIRE HYDRANT	1.00	EACH		\$	
0690	03496		VALVE-6 IN	1.00	EACH		\$	
0700	03551		TAPPING SLEEVE & VALVE	1.00	EACH		\$	
0710	04903		REFERENCE MARKER TRAILHEAD MILE MARKER	2.00	EACH		\$	
0720	05950		EROSION CONTROL BLANKET	25,500.00	SQYD		\$	
0730	05952		TEMP MULCH	159,636.00	SQYD		\$	
0740	05953		TEMP SEEDING AND PROTECTION	120,936.00	SQYD		\$	
0750	05963		INITIAL FERTILIZER	2.80	TON		\$	
0760	05964		20-10-10 FERTILIZER	12.50	TON		\$	
0770	05985		SEEDING AND PROTECTION	239,870.00	SQYD		\$	
0780	05989		SPECIAL SEEDING CROWN VETCH	2,000.00	SQYD		\$	
0790	05990		SODDING	7,865.00	SQYD		\$	
0800	06407		SBM ALUM SHEET SIGNS .125 IN	262.00	SQFT		\$	
0810	06410		STEEL POST TYPE 1	948.00	LF		\$	
0820	06510		PAVE STRIPING-TEMP PAINT-4 IN	500.00	LF		\$	
0830	06514		PAVE STRIPING-PERM PAINT-4 IN	51,542.00	LF		\$	
0840	06566		PAVE MARKING-THERMO X-WALK-12 IN	1,214.00	LF		\$	
0850	06567		PAVE MARKING-THERMO STOP BAR-12IN	152.00	LF		\$	

PROPOSAL BID ITEMS

REVISED ADDENDUM #2: 10-20-15

151067

Page 3 of 5

Report Date 10/20/15

LINE	BID CODE	ALT	DESCRIPTION	QUANTITY	UNIT	UNIT PRIC	FP	AMOUNT
0860	06570		PAVE MARKING-PAINT CROSS-HATCH	40.00	SQFT		\$	
0870	06574		PAVE MARKING-THERMO CURV ARROW	11.00	EACH		\$	
0880	08018		RETAINING WALL	3,806.00	SQFT		\$	
0890	08100		CONCRETE-CLASS A	65.00	CUYD		\$	
0900	10020NS		FUEL ADJUSTMENT	29,131.00	DOLL	\$1.00	\$	\$29,131.00
0910	10030NS		ASPHALT ADJUSTMENT	31,680.00	DOLL	\$1.00	\$	\$31,680.00
0920	15092		S MANHOLE	2.00	EACH		\$	
0930	20081NN		CONNECT TO WATER MAIN	1.00	EACH		\$	
0940	20156EC		FIRE HYDRANT ASSEMBLY	1.00	EACH		\$	
0950	20206EC		PAVE MARK HANDICAP SYMBOL	2.00	EACH		\$	
0960	20418ED		REMOVE & RELOCATE SIGNS	3.00	EACH		\$	
0970	20782NS714		PAVE MARKING THERMO-BIKE	6.00	EACH		\$	
0980	20985ND		CLEANOUT PIPE	2.00	EACH		\$	
0990	21289ED		LONGITUDINAL EDGE KEY	1,985.00	LF		\$	
1000	21341ND		BOLLARDS	12.00	EACH		\$	
1010	22000ED		WOOD PLANK FENCE 4 BOARD FENCE	16,236.00	LF		\$	
1020	22000ED		WOOD PLANK FENCE 2 BOARD FENCE	1,386.00	LF		\$	
1030	22139NN		CONNECT TO SEWER MAIN IN	1.00	EACH		\$	
1040	22995EN		SANITARY SEWER SERVICE CONNECTION- 4 IN	265.00	LF		\$	
1050	23086EN		CONCRETE MEDIAN BARRIER TY 9C	300.00	LF		\$	
1060	23158ES505		DETECTABLE WARNINGS	520.00	SQFT		\$	
1070	23274EN11F		TURF REINFORCEMENT MAT 1	15,500.00	SQYD		\$	
1080	23758EC		ELECTRICAL SERVICE CONNECTION	2.00	EACH		\$	
1090	23802EC		PRECAST VEHICLE STOP	20.00	EACH		\$	
1100	23836EC		RELOCATE LIGHT POLE	2.00	EACH		\$	
1110	23837EC		RELOCATE UNDERGROUND ELECTRIC	310.00	LF		\$	
1120	30017		STONE PYLON 12 FT TALL	1.00	EACH		\$	
1130	30020		BIKE RACK FORMS AND SURFACES	1.00	EACH		\$	
1140	30050		SPEED HUMP 11 LOCATIONS	1.00	LS		\$	
1150	30062		REMOVE STEEL PIPE BOLLARD REMOVE BOLLARDS	4.00	EACH		\$	
1160	30064		MANUFACTURED RESTROOM BUILDING	2.00	EACH		\$	
1170	30083		FLAGPOLE - 30 FT	6.00	EACH		\$	
1180	30084		BANNER	6.00	EACH		\$	
1190	30085		DRY LAID ROCK SEATWALL	71.00	LF		\$	
1200	40000		SITE PREPARATION LANDSCAPING AND TRAILHEAD AMMENITIES	1.00	LS		\$	

Section: 0003 - DRAINAGE

LINE	BID CODE	ALT	DESCRIPTION	QUANTITY	UNIT	UNIT PRIC	FP	AMOUNT
1210	00441		ENTRANCE PIPE-18 IN	41.00	LF		\$	

PROPOSAL BID ITEMS

REVISED ADDENDUM #2: 10-20-15

151067

Page 4 of 5

Report Date 10/20/15

LINE	BID CODE	ALT	DESCRIPTION	QUANTITY	UNIT	UNIT PRIC	FP	AMOUNT
1220	00460		CULVERT PIPE-12 IN	369.00	LF		\$	
1230	00461		CULVERT PIPE-15 IN	208.00	LF		\$	
1240	00462		CULVERT PIPE-18 IN	915.00	LF		\$	
1250	00464		CULVERT PIPE-24 IN	753.00	LF		\$	
1260	00466		CULVERT PIPE-30 IN	1,060.00	LF		\$	
1270	00469		CULVERT PIPE-42 IN	65.00	LF		\$	
1280	01200		PIPE CULVERT HEADWALL-12 IN	1.00	EACH		\$	
1290	01202		PIPE CULVERT HEADWALL-15 IN	8.00	EACH		\$	
1300	01202		PIPE CULVERT HEADWALL-15 IN	2.00	EACH		\$	
1310	01204		PIPE CULVERT HEADWALL-18 IN	7.00	EACH		\$	
1320	01208		PIPE CULVERT HEADWALL-24 IN	4.00	EACH		\$	
1330	01208		PIPE CULVERT HEADWALL-24 IN	2.00	EACH		\$	
1340	01210		PIPE CULVERT HEADWALL-30 IN	10.00	EACH		\$	
1350	01210		PIPE CULVERT HEADWALL-30 IN	4.00	EACH		\$	
1360	01214		PIPE CULVERT HEADWALL-42 IN	2.00	EACH		\$	
1370	01456		CURB BOX INLET TYPE A	3.00	EACH		\$	
1380	01480		CURB BOX INLET TYPE B	3.00	EACH		\$	
1390	01496		DROP BOX INLET TYPE 3	2.00	EACH		\$	
1400	01529		DROP BOX INLET TYPE 6D	1.00	EACH		\$	
1410	01541		DROP BOX INLET TYPE 10	3.00	EACH		\$	
1420	01621		CONC MED BARR BOX INLET TY 9B1	1.00	EACH		\$	
1430	01643		JUNCTION BOX-24 IN	1.00	EACH		\$	
1440	01756		MANHOLE TYPE A (REVISED: 10-20-15)	2.00	EACH		\$	
1450	22767ES710		DROP BOX INLET TY 6E	1.00	EACH		\$	

Section: 0004 - BRIDGE

LINE	BID CODE	ALT	DESCRIPTION	QUANTITY	UNIT	UNIT PRIC	FP	AMOUNT
1460	02403		REMOVE CONCRETE MASONRY	86.00	CUYD		\$	
1470	08001		STRUCTURE EXCAVATION-COMMON	204.00	CUYD		\$	
1480	08100		CONCRETE-CLASS A	176.00	CUYD		\$	
1490	08150		STEEL REINFORCEMENT	33,475.00	LB		\$	

Section: 0005 - LANDSCAPING

LINE	BID CODE	ALT	DESCRIPTION	QUANTITY	UNIT	UNIT PRIC	FP	AMOUNT
1500	20014ES724		EASTERN REDBUD	7.00	EACH		\$	
1510	20065ES724		SHUMARD OAK	4.00	EACH		\$	
1520	20512NS724		RED MAPLE	4.00	EACH		\$	
1530	20516NS724		TULIP POPLAR	5.00	EACH		\$	
1540	20566NS724		FLOWERING DOGWOOD	6.00	EACH		\$	
1550	22694NS724		SHADEMASTER HONEYLOCUST	5.00	EACH		\$	
1560	23646EC		CONTAINER PLANTS KNOCKOUT ROSES-3 GAL	26.00	EACH		\$	
1570	24558ED		ORNAMENTAL GRASS 3 GAL	57.00	EACH		\$	

151067

PROPOSAL BID ITEMS

REVISED ADDENDUM #2: 10-20-15
Page 5 of 5

Report Date 10/20/15

Section: 0006 - DEMOBILIZATION &/OR MOBILIZATION

LINE	BID CODE	ALT	DESCRIPTION	QUANTITY	UNIT	UNIT PRIC	FP	AMOUNT
1580	02568		MOBILIZATION	1.00	LS		\$	
1590	02569		DEMOBILIZATION	1.00	LS		\$	

SPECIAL NOTE FOR PERVIOUS ASPHALT PAVEMENT 10-15-2015

DESCRIPTION. Construct pervious asphalt pavement.

MATERIALS. The pervious asphalt pavement structure shall meet the following requirements:

Site Grading. The existing soil subgrade under the pervious asphalt pavement structure shall not be compacted or subject to excessive construction equipment traffic prior to geotextile and stone bed placement. The bottom of the recharge bed shall remain flat and where elevation changes exist, consider a terrace approach rather than constructing steep slopes.

Geotextile (Filter Fabric). A non-woven geotextile fabric shall be placed as the separation layer between the soil subgrade and the stone reservoir layer. (In accordance with KYTC Section 843, Table IV)

Stone Recharge Bed. If shown on the plans, the aggregate reservoir layer shall be placed at a thickness as shown on the plans and utilize single-sized stone that has been washed and does not contain excessive dust or fine materials. The thickness of the stone recharge bed shall be 12 inches or greater. Aggregates shall meet the gradation and material property requirements set forth in Section 805 of the KYTC Standard Specifications and shall consist of either Gradation – Size No. 2 or Size No. 3 stone. The intent is to provide a single-size crushed large stone with about 40 percent voids. See plans for depths.

Choker Course. The working platform placed over the reservoir layer shall also meet the requirements set forth in Section 805 of the KYTC Standard Specifications and shall consist of a washed single-sized stone (Size No. 57, Size No. 8, Size No. 9, or Size No. 11 stone). Dense Graded Aggregate (or any other impermeable material) shall NOT be used within the pavement structure.

Pervious Asphalt Surface Layer. The hot mix asphalt layers shall be at least five (5) inches thick and placed in two separate lifts. The asphalt mixture shall utilize a gradation consistent with an Open-Graded Friction Course (OGFC) as described in Section 404 of the KYTC Standard Specifications.

ASHPALT MIXTURE REQUIREMENTS. Use PG 76-22 liquid asphalt binder in pervious pavement applications. Construct the pervious pavement using an open graded friction course mixture in accordance with KYTC Section 404 or NAPA IS 131 with a type “D” aggregate. Laboratory air voids should be 16 percent or greater to assure permeability in the mix. The asphalt content shall be 6.0% or greater to provide the necessary coating of the aggregates for long term durability.

MEASUREMENT AND PAYMENT. Payment for the pervious asphalt pavement includes all materials, equipment, labor for furnishing and placing the pervious asphalt mixture and complying with all requirements. Payment for aggregates and pervious asphalt shall be on a per ton basis. Payment includes the placement of materials at a depth as specified in the plans.

Pay Item. Pervious Asphalt Pavement: Pay Unit – Ton.

CONSTRUCTION CONSIDERATIONS.

Temperature Limitations: The KYTC Standard Specifications require a minimum ambient air temperature of 60 degrees Fahrenheit for placement of Open-Graded Friction Course. Since drain-down of the liquid asphalt can occur with these types of mixtures, the Contractor may, with approval of the Engineer, lower the plant temperatures as much as 50 degrees in the hot summer months to avoid this problem.

Mixture Placement: Utilize conventional paving equipment for placement of the pervious asphalt layer. In order to seat the aggregates within the mixture, make two or three passes with a small roller immediately after placement. More frequent rolling tends to reduce the infiltration capabilities of the pervious mixture. After final rolling, traffic should be restricted for the first 24 hours when the pavement tends to be tender. Care must be taken so that the porosity of the pavement is not compromised.

SECTION 02795 – EZ ROLL GRAVEL PAVERS (OR APPROVED EQUAL)

PART 1 – GENERAL

1.1 General Provisions

- A. The Conditions of the Contract and all Sections of Division 1 are hereby made a part of this Section.

1.2 Description of Work

- A. Work Included:
 - 1. Provide and install sandy gravel road base as shown on drawings, to provide adequate support for project design loads. See 2.2 Materials.
 - 2. Provide EZ Roll Gravel Paver System products (or approved equal) including EZ Roll Gravel Paver units, and installation per the manufacturer's instructions furnished under this section.
 - 3. Provide and install specified gravel to fill the EZ Roll Grassroad Paver units.
- B. Related Work:
 - 1. Subgrade preparation under Standard KYTC Specifications
 - 2. Subsurface drainage materials – Standard KYTC Specifications, when needed

1.3 Quality Assurance

- A. Follow Standard KYTC Specifications requirements.
- B. Installation: Performed only by skilled workpeople with satisfactory record of performance on landscaping or paving projects of comparable size and quality.

1.4 Delivery, Storage, and Handling

- A. Protect EZ Roll Gravel Paver units from damage during delivery and store under tarp to protect from sunlight, when time from delivery to installation exceeds one week.

1.5 Project Conditions

- A. Review installation procedures and coordinate EZ Roll Gravel Paver work with other work affected. Generally, EZ Roll Gravel Paver is installed at the same time as project grass installation, nearly the last site construction activity.
- B. All hard surface paving adjacent to EZ Roll Gravel Paver areas, including concrete walks and asphalt paving should be completed prior to installation of EZ Roll Gravel Paver.

- C. Stakes shall be used at all vehicular entrance and exit points; the layout in the entrance and exit areas shall be a minimum of 1 stake per 4 square feet and extend at least 8 ft onto the paver system from the entrance and exit point. Stakes may also be required when EZ Roll Gravel Paver is placed on a slope greater than 6%.
- D. Slopes for EZ Roll Gravel Paver surfaces can vary from flat to 10%, depending upon vehicle types to use the surface. Please note that fire lanes, or other emergency vehicles, will generally require a slope that is 5% or less. If there are any questions regarding existing slopes on this project, please contact the Landscape Architect or Civil Engineer.
- E. Cold weather:
 - 1. Do not use frozen materials or materials mixed or coated with ice or frost.
 - 2. Do not build on frozen, saturated or muddy subgrade.
- F. Protect partially completed paving against damage from other construction traffic when work is in progress, and until gravel fill has been placed. Any barricades constructed must still be accessible by emergency and fire equipment during and after installation.
- G. Protect adjacent work from damage during EZ Roll Gravel Paver installation.

PART 2 – PRODUCTS

2.1 Availability

- A. Manufacturer: NDS, Inc., 851 North Harvard Avenue, PO Box 339, Lindsay, California 93247. Toll Free (800) 726-1994. Toll Free Fax (800) 726-1998. Phone (559) 562-9888. Fax (559) 562-4488. Website: www.ndspro.com. E-Mail nds@ndspro.com.
- B. Or approved equal.

2.2 Materials

- A. Base Course - Example: Sandy gravel material from local sources commonly used for road base construction, passing the following sieve analysis.

<u>% Passing</u>	<u>Sieve Size</u>
100	3/4"
85	3/8"
60	#4
30	#40
< 3	#200

- 1. Sources of the material may include "pit run" or "crusher run." Pit run or crusher run material will typically require sand be added (33% by volume) to ensure long term porosity. Should local sources not be available an alternative mixture can be created by mixing 2/3 crushed stone (0.75" dia.) with 1/3 sand as available.
- 2. AASHTO #57 (Typical) stone may be used as a base material; alternate materials are acceptable per plans and as locally available. The base material shall be porous and have a storage capacity equivalent to design depth (per plans).

- B. EZ Roll Gravel Paver will have a geotextile fabric heat bonded to the bottom of the paver units in one continuous sheet per roll. The Geotextile shall be a non-woven, polypropylene with a tensile strength of 110 lbs and an AOS of U.S. Sieve #50.
- C. EZ Roll Gravel Paver Units: Injection-molded, linked and nested honeycomb cell, rolled gravel paver structure (24"x24"x1" high, 4.0 ft² each) with Seventy-two 2-1/4-inch hexagonal cells in nested honeycomb form, with integrated cross-links to allow for rollout installation allowing maximum grass root penetration and development. Top Surface of Hexagonal Cell Wall is smooth, without notches or grooves. Bottom Surface Open Area is greater than 80 percent or 478 square inches per paver section. The plastic shall be 100% recycled Polyolefin with UV inhibitors. Loading capability is equal to 66,000 PSF when empty, over an appropriate depth of road base. Unit weight = 2.31 lbs. Units shall be shipped in pre-assembled of either 4 feet x 24 feet (96 sf) or 4 feet x 150 feet (600 sf). Panels are pre-assembled with lateral snap locks.
- D. Gravel Fill: Obtain specified gravel to fill the 1-inch high cells and spaces between the cells.

PART 3 – EXECUTION

3.1 Inspection

- A. Examine sub-grade and base course installed conditions. Do not start EZ Roll Gravel Paver installation until unsatisfactory conditions are corrected. Check for improperly compacted trenches, debris, and improper gradients.
- B. Installation constitutes acceptance of existing conditions and responsibility for satisfactory performance. If existing conditions are found unsatisfactory, contact Quality Control Manager for resolution.

3.2 Preparation

- A. Place base course material over prepared sub base to grades shown on plans, in lifts not to exceed 6" (150 mm), compacting each lift separately to 95% Modified Proctor. Leave minimum 1" (25mm) for EZ Roll Gravel Paver unit and gravel fill to Final Grade.

3.3 Installation of EZ Roll Gravel Paver Units

- A. Install the EZ Roll Gravel Paver units by placing units with cells facing up and stake along each side at ten (10) foot intervals. When the ends of two (2) rolls are butt jointed, four (4) stakes will be used on each end at equal spacing. Stakes will be inserted into molded stake holes and stakes will be provided by NDS at a quantity of forty (40) per six hundred (600) square foot roll. Adjacent rolls will be oriented to allow for a fabric overlap and cell to cell contact. Units can be easily shaped with hand pruners. Maintain 1" clearance to any pre-installed object or surface structure. Units placed on curves and slopes shall be anchored to the base course, using stakes as required to secure units in place. Tops of cells shall be between 0.25" to 0.5" below the surface of adjacent hard-surface pavements.

3.4 Installation of Gravel

- A. Gravel shall be filled to the level specified on plans.
- B. Install specified gravel in cells as they are laid in sections by dump truck, other equipment, or from buckets mounted on tractors. Gravel should be added to the cells from an area already filled. Gravel should be spread to fill each cell to the top surface.

1. Minimum Maintenance Design - fill cells with gravel to the top surface plus a maximum of ¼”.
2. Maximum Coverage Design - fill cells with gravel to a depth of ½” – 1” above the top surface of the cells.

3.5 Protection

- A. EZ Roll Gravel Paver Units shall not be used regularly until stakes, clips and fill material has been placed. Emergency Access shall be acceptable during the installation process.

3.6 Cleaning

- A. Ensure no debris is present within the EZ Roll Gravel Paver cells prior to installation.
- B. Remove and replace segments of EZ Roll Gravel Paver units when three or more adjacent cells are broken or damaged. Reinstall by removing small damaged area and replacing with a cut to fit section of EZ Roll Gravel Paver. Use clips to fasten the piece to adjacent cells so no evidence of replacement is apparent.
- C. Perform cleaning during the installation of work and upon completion of the work. Remove all excess materials, debris, and equipment from site. Repair any damage to adjacent materials and surfaces resulting from installation of this work.

END OF SECTION 02795

HORSE PARK IMPROVEMENTS

SECTION 13 34 23 - PRE-ENGINEERED RESTROOM BUILDING

Specification Date: 10/16/2015

PART 1: GENERAL

1.1 SUMMARY

- A. The work shall include furnishing the sealed architectural, structural, mechanical, and electrical plan sets as well as the structural, mechanical, and electrical building components as a complete, pre-designed packaged restroom building as shown on drawings and as specified herein.

1.2 SCOPE

- A. Packaged restroom building and all associated design and engineering, with all listed components supplied by Romtec, Inc., hereafter designated as the **building supplier**. The **building supplier** shall be a single source design, engineering, and manufacturer who shall supply the packaged restroom building and meet all the following scope requirements.
- B. The contractor is responsible for building installation, hereafter designated as the **building installer**. **Building installer** work will generally include: site preparation and grading, excavations for structures, backfill and/or structural backfill, foundation and pad construction, and building construction.
*Note: Romtec Inc. does not serve as the **building installer**. Romtec Inc. is only the packaged restroom **building supplier**.*
- C. The packaged restroom building should be the latest standard product of a **building supplier** regularly engaged and having at least ten (10) years of experience in packaged restroom building engineering, design, supply, and construction.
- D. The **building supplier** must meet or exceed the product specification which was prepared using the Romtec Inc. building as a guide and example.
- E. Alternate **building suppliers** shall demonstrate that they have designed, engineered, produced, delivered, and constructed at minimum ten (10) other functioning

packaged restroom buildings of similar type. Project completion date and a reference contact from the owner of each project must be provided.

- F. Alternate **building suppliers** must also disclose all instances of any prior municipal or landscape architect's rejection of the same or similar product as an "or equal" to the specified basis of design building package.
- G. Contractors wanting to propose an "or equal" **building supplier** other than Romtec Inc. are required to submit a complete submittal package with full sealed plan sets, calculations, and all pre-engineered structural items, ten (10) calendar days prior to the bid opening date. Any products proposed as "or equal" that are not as specified must be specifically listed and accompanied by the manufacturer's data sheets for review. This will be approved or denied prior to the bid opening. Incomplete submittals will be rejected and returned to the bidder.
- H. The building and its concrete footings, foundation, and slab are to be engineered by the **building supplier** to meet site specific conditions including wind and snow loading, local frost depth, and ground conditions.
- I. Footings are to be dug by the **building installer** and poured on site to meet local code for permanent structures. A prefabricated, modular mat placed on compacted base is not an accepted equal to a site specific, site poured, engineered foundation.
- J. Typical fasteners such as nails, staples, and screws shall be supplied by **building installer**. Atypical fasteners shall be supplied by **building supplier**.
- K. Building is to be designed and constructed on site to meet local codes and approvals for permanent structures. Any building that is temporary, permanently relocatable, prefabricated modular, an offsite constructed product, or pre-cast is not an accepted equal to permanent, on site, conventional construction.
- L. No outside entity approval will override the local building authority's codes and inspections. Seals meant for modular homes and production plant certifications will not be allowed in lieu of sealed plans from a licensed engineer and conventional inspection during construction.
- M. The Romtec building package has been quoted with the specific product colors noted below. Changes to these color selections may result in a price increase.

- N. Building sidings, treatments, and roofing are to be as specified. Precast buildings with painted textures are not to be considered architecturally equivalent.
- O. Within three (3) weeks of contract award, the **building supplier** shall submit one (1) copy of the packaged restroom building preliminary Scope of Supply and Design Submittal (SSDS), including the plan set drawings with all footings, foundations, slab, and structural details.
- P. The SSDS is reviewed by the necessary parties and returned to the **building supplier** with any revisions to the contractual language, product data sheets, and/or plan set drawings. The drawings shall be of sufficient detail for the engineer(s) to review for conformity to the contract.
- Q. One full rounds of SSDS revisions are to be provided by the **building supplier** in the design and engineering services before additional fees apply.
- R. The **building supplier** shall submit complete, code compliant building plans including plans, elevations, sections, and details, under seal of a National Kitchen and Bathroom Association (NKBA) certified technical designer.
- S. The **building supplier** shall submit complete structural calculations meeting code loads, design loads, and seismic design under seal of a professional Engineer with current license in the state of Kentucky.
- T. Once submittal approval is received, three (3) wet stamped sets of plans and structural calculations shall be issued. Any additional plan sets and structural calculations can be obtained for a fee.
- U. The **building supplier** does not provide a final site plan.
- V. The reviewing authority reserves the right to review or reject all submittals at their sole discretion.
- W. All work and materials shall comply with the latest industry building codes and regulations for the state of Kentucky.
- X. Americans with Disabilities Act Accessibility Guidelines (ADAAG) will be followed in design, manufacture, and construction.
- Y. The specific supplier is indicated for each item. **Building supplier, building installer, and owner supplied** components are listed as such. Products not listed as **building supplier** or **building installer** supplied, are to be **owner supplied**.

1.3 SUBMITTAL DOCUMENTATION

The following sections shall be included in the *building supplier*'s Scope of Supply and Design Submittal. Incomplete submittals will be rejected and returned to the bidder.

- A. INTRODUCTION
- B. SCOPE OF SUPPLY – PRODUCTS & SERVICES
- C. PRODUCTS & SERVICES NOT SUPPLIED BY BUILDING SUPPLIER
- D. PROJECT SITE
- E. WARRANTY & LIMITATIONS
- F. PROJECT DESIGN
- G. PRODUCT DATA SHEETS

1.4 WARRANTY

- A. The building and all its associated components shall be warranted against defects in materials and workmanship for a period of not less than one (1) year from date of final acceptance.

1.5 MAINTENANCE

- A. The *building supplier* does not supply maintenance for the packaged restroom building.

PART 2: PRODUCTS

2.1 APPROVED MANUFACTURERS

- A. Romtec, Inc.,
18240 North Bank Rd. Roseburg, OR. 97470
Tel: 541-496-3541; Fax: 541-496-0803; Email: romtec1@romtec.com
Web: www.Romtec.com
- B. Requests for substitutions will be considered in accordance with provisions of Section 1.

2.2 BUILDING DESCRIPTION

- A. Refer to plans for quantities, dimensions, locations, and installation methods for the materials and items described in this section. The **building supplier** reserves the right to make substitutions of equivalent materials and items without notice.
- B. Building dimensions shall match what is indicated on drawings.

2.3 CAST IN-PLACE CONCRETE

- A. All equipment, labor, trades and materials shall be supplied by **building installer**.
 - 1. Includes all materials and labor for foundations/footings, interior slabs, exterior/entry slabs, and sidewalks.
- B. Engineered fill shall be ¾” minus crushed aggregate around footings, foundations, and slabs as required.
- C. Slab vapor barrier shall be 6-mil continuous plastic under the concrete slab.
- D. The foundation shall be installed as designed with all cast in-place concrete poured to dimensions specified in final plans.
 - 1. Footings will be built to 24” depth or local frost depth, whichever is deeper.
 - 2. Minimum compressive strength of 3000 psi at 28 days, 4+/-1” slump, with max ¾” aggregate, cured in accordance with ACI 308.
 - 3. Slabs shall have a fine broom finish with joints required in flat work as shown on plans.
 - 4. Steel rebar shall be installed as specified in final plans.

- E. Concrete slab sealer shall be a water-based transparent curing, sealing and dust proofing compound with two (2) coats to be applied per manufacturer's instructions.
- F. Refer to drawings for sidewalks and entry slabs.
 - 1. Minimum concrete compressive strength of 2500 psi at 28 days.
 - 2. Remesh or rebar reinforcement shall be used in sidewalks.
 - 3. All sidewalks shall be finished with a fine broom with control joints installed per local code.

2.4 WALLS

- A. Concrete Masonry Units (CMU) shall be supplied by **building supplier**.
 - 1. Walls shall be constructed of 8"W x 16"L x 8"H mortar joint concrete masonry units (concrete blocks).
 - 2. Blocks shall be manufactured to ASTM C90 designation for load bearing concrete masonry units.
Note: Building installer may be required to notch CMU block for bond beams and cut whole blocks to make half blocks. Romtec is not responsible for any cost or construction delays associated with this work.
 - 3. Blocks have split face exterior and smooth interior surface. Blocks shall be manufacturer's standard gray color.
 - 4. Interior wall finish shall be latex epoxy paint supplied by **building installer**.
- B. Masonry (concrete) grout shall be supplied by **building installer**.
 - 1. Grout shall have a minimum compressive strength of 2500 psi at 28 days, 9+/-1" slump, with max 1/2" aggregate.
 - 2. Fine or coarse grout may be used in accordance with 2009 UBC.
 - 3. All CMU must be fully grouted and may not be wetted.
- C. Rebar in walls shall be supplied by **building installer**.
 - 1. All walls have #4 and # 5 rebar, see plans for spacing.
 - 2. All rebar used in building must meet ASTM A615 manufacturing standards and is to be placed per plans.
- D. Door system components shall be supplied by **building supplier**.

1. Door shall be Steelcraft® SZ-18 Series Flush door with polystyrene core, 18-gauge galvanized A-60 steel, and primed finish.
 2. Door frame shall be pre-welded Steelcraft® 3-Sided flush frame, 16-gauge galvanized A-60 steel, and primed finish.
 3. Masonry door clips (3/16" dia.) for door frame shall be fitted between the doorframe and concrete blocks to bond frame to wall. Door clips allow full internal grouting of the frame during installation.
 4. Door locks shall be standard duty commercial lever locks with no exposed mounting screws, non-handed, ADA compliant, and BHMA certified ANSI A156.2.
 5. Door hinges shall be ANSI A5112 with non-removable pin and two ball bearings.
 6. Door closer shall have double heat treated steel tempered springs, and a triple heat treated steel spindle.
 7. Restroom door lock shall be Schlage Lock, B-Series ADA compliant, Cylinder Deadlock, Dormitory Safety.
 8. Pull plate & handle shall be stainless steel.
- E. Wire weave gable vents for natural ventilation shall be supplied by **building supplier**.
1. Vents shall include pre-assembled steel frame, 1" square lock joint wire weave mesh (10-gauge), and integral insect screen.
 2. Vents on shower side shall be louvered.
 3. Vents shall be powder coated black.

2.5 ROOFING

- A. Roof shall be supplied by **building supplier** except where noted.
- B. Glulam beams shall be 24F-V4 and architectural grade.
 1. Seal shall be supplied by **building installer**.
- C. Tongue & groove decking shall be 2x6 V-edge deck boards, select deck Douglas fir.
 1. Seal shall be supplied by **building installer**.

- D. Roofing-metal shall be Custom Bilt Metals TFR-36, 29-gauge metal roofing, with 36 in. coverage width.
1. Roofing package shall include inside and outside foam closures, matching trim (eaves, gables and ridge) and fasteners, sheet metal flashing (all sides), and 30# felt (under metal).
 2. Roofing color shall be selected from manufacturers standard color chart by **building owner**.

2.6 PLUMBING

- A. Plumbing rough-in, installation and trim shall be supplied by **building installer**.
1. All underground water service and sewer drain(s) from building to be as specified in final site plan.
 2. All floor drains shall be as shown on final building plans.
 3. Building water shutoff valve, drain, and all rough piping shall be as shown on final building plans. Final location to be set onsite.
 4. Minimum water pressure at toilet and urinal flush valves shall be 50 psi. with minimum pipe sizing as per 2009 Uniform Plumbing Code Section 610.
 5. Install the supplied fixtures and all other plumbing supplies as specified in final plans.
- B. Floor drain shall be supplied by **building installer**.
- C. Water line drain valve shall be supplied by **building installer**.
- D. Sewer line backflow check valve shall be **owner supplied**.

2.7 RESTROOM FIXTURES

- A. Restroom fixtures shall be supplied by **building supplier**.
- B. Toilets shall be floor mounted, white vitreous china.
1. Flush valve shall be a chrome manual lever with ADA Compliant Metal Oscillating Non-Hold-Open Handle with Triple Seal Handle Packing.
- C. Urinals (men's bldg. only) shall be white vitreous china, top supply and bottom discharge.
1. Flush valve shall be a chrome manual lever with ADA compliant metal oscillating non-hold-open handle.

- D. Lavatory shall be 19 in. x 17 in. white vitreous china, wall hung with anti-splash rim and concealed front overflow.
 - 1. Faucet shall have a pivot action lever style handle, temperature control through 180 degree arc, and third party certification to meet ASME A112.18.1M.
- E. Grab bars shall be manufactured by the Bradley Corp.
- F. Toilet paper dispensers shall be white painted steel with 2-roll capacity.
- G. Soap dispenser shall be able to dispense thin liquid soaps, synthetic detergents, and vegetable oil soaps. Capacity: 24 oz. liquid soap.
- H. Paper towel dispenser shall include touchless, smooth, one at a time towel presentation with capacity of 400 multi-fold towels.
- I. Restroom partitions shall be solid phenolic core high pressure decorative laminate constructed of melamine face sheets bonded under heat and high pressure phenolic resin.
 - 1. Partition color shall be Black.
- J. ADA accessible shower panel shall be surface mounted, tamper resistant 16-ga. stainless steel panel with chrome head and push-button single control, 60 in. flexible hand held wand, and recessed soap dish.
- K. Standard shower panel shall be Metcraft surface mounted, tamper resistant 16-ga. stainless steel panel with chrome head, hand-held shower wand (ADA stalls only) with vacuum breaker and quick disconnect, push-button controls, and recessed soap dish.
- L. Shower benches shall be steel framed with Cedar slats.

2.8 ELECTRICAL

- A. Electrical rough-in, installation and trim shall be supplied by **building installer**.
 - 1. All underground and/or overhead service to building shall be as specified in the final site plan.
 - 2. Electric meter base and all rough wiring, switches, plugs and circuit breakers shall be as shown on final plans. The **building supplier** does not supply the meter base and meter.

3. **Building installer** is responsible for all necessary wire, connectors, grounding, conduit etc. to install the components and meet national and local code. The installation of these components shall comply with all state and/or local codes.
- B. Light fixtures shall be supplied by **building supplier**.
 1. Wall mounted light fixtures shall have a durable polycarbonate housing and high-impact polycarbonate refractor.
 2. Ceiling mounted light fixtures shall be 48” fluorescent.
- C. Electric tank water heater shall be supplied by **building supplier**. Each building shall contain two 50 gallon residential water heaters.
- D. Main breaker panel shall be supplied by **building supplier**.
 1. Breaker Panel shall be 100 Amp, single-phase and rain tight.
*Note: This panel has been sized to accept only the loads of the **building supplier** electrical fixture package. The **building supplier** has the right to modify the main breaker panel to be most efficient based on any changes.*

2.9 OTHER MATERIALS & EQUIPMENT

- A. Unless otherwise specified, the following products and materials are NOT supplied by Romtec.
 1. All items not listed in Romtec Products.
 2. Any item listed as supplied by “installer”, “contractor”, “owner”, or “others”.
- B. Unless specified in the plans or submittals, Romtec does not supply the following:
 1. Building installation
 2. Asphalt paving
 3. Masonry pavers
 4. Sidewalks
 5. Landscaping
 6. Site grading
 7. Cast-in-place concrete foundations, footings, interior slabs and exterior/entry slabs
 8. Concrete slab sealer
 9. Mortar
 10. Concrete grout
 11. Rebar
 12. Latex epoxy paint
 13. Caulk for siding
 14. Plumbing rough in, installation and trim

15. Electrical rough in, installation and trim
16. Drain valves and backflow check valves
17. Branch circuit breakers
18. Switches & outlets
19. Fluorescent tubes for light fixtures
20. Wall hangers for toilets
21. Typical fasteners; for example roofing nails, staples, etc.
22. Fasteners not included in product packaging
23. Irrigation Equipment
24. Gutters and downspouts
25. Fire alarm and fire suppression equipment
26. Lighting equipment not attached to the building
27. Clear coat finish for all decking, glulam beams, posts, and extensions
28. All other items indicated on final plans or required by building codes which are not specifically stated as supplied by Romtec.

PART 3: EXECUTION

3.1 SPECIAL INSPECTION

- A. If required, special inspection shall be *owner supplied*.
- B. If special inspection is required per the building department or other regulatory agencies, then the *building supplier* can assist but NOT provide this service.

3.2 INSTALLATION

- A. All components to be installed according to the plan sets and/or manufacturer's instructions.

3.3 OPERATION & MAINTENANCE MANUALS

- A. Upon installation, do not throw away the Operations & Maintenance manuals that are provided by some manufacturers in their packaging. Requests for additional copies from the *building supplier* will result in subsequent charges.